

**Simpson's
and
Pharmacy
Bulk Foods**

301 MAIN - GERALDTON

PHOTOFINISHING - CANDIES
SPICES - BAKING SUPPLIES
HEALTH & BEAUTY AIDS
"FAMILY CARE SINCE 1977"

854-1025

Visit & Browse

**MACLEODS
HARDWARE STORE**

104 Main - Geraldton

854-0111

**Danef's
Food
Market**

The Best In
Quality Meats
Fruits & Vegetables
FREE IN-TOWN DELIVERY
108 1st Ave. North
(NEXT TO THE POST OFFICE)

(807) 854-1401

1. The Glory Hole...

.6 km east of the hwy. 11-584 junction, a large, deep crater created by MacLeod goldminers from underneath. You'll find it fenced off but worth a look.

2. Mosher Mine...

Geraldton's 10th gold producer, started in 1954 and capped in 1971. It was linked underground to MacLeod Cockshutt.

3. Magnet Mine...

About 8 km west of the junction, Magnet started as a small, rich gold producer in 1936, closing in 1952. It's now being re-explored by Roxmark Mines Ltd.

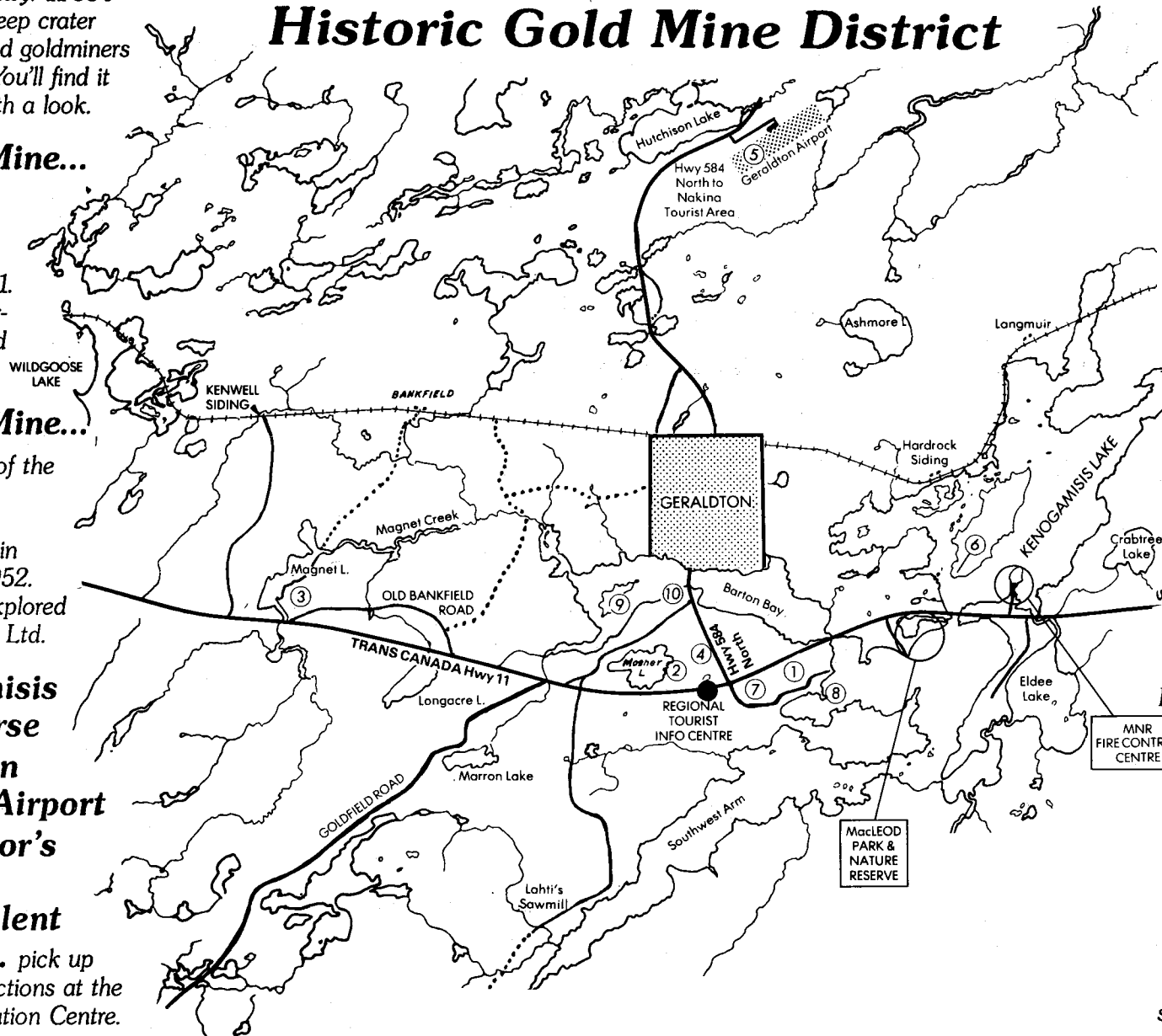
**4. Kenogamisis
Golf Course**

**5. Geraldton
District Airport**

**6. Prospector's
Cabin**

For an excellent
Canoe Trip... pick up
your map and directions at the
Chamber's Information Centre.

**Discover Geraldton's
Historic Gold Mine District**



Visit Geraldton's Information Centre on arrival

7. MacLeod Mine...

Headframe No. 1, now owned by the Town, still stands tall at the hwy 11-584 junction. The Camp's biggest producer, it netted over 2 million oz. gold between 1936 & 1970. An interesting site to explore.

8. Hardrock Mine...

Known as Discovery Point - the first shaft in this area where the Geraldton Gold Camp really got its start.

9. Elmos Mine...

On an island in the west end of Hardrock Bay, noted by a great waste rock pile that offers excellent picking. Access by boat - rockhound's delight!

**10. Little Long Lac
Gold Mine...**

Founded in 1932, this historical gold producer put the District on the map, producing over 600,000 oz. gold and 53,000 oz. silver. It is Lac Minerals' birthplace.

Note to Visitors...

Please note that many of these properties are under private ownership and that trespassing signs must be obeyed.



Northern

SITUATED IN THE HEART
OF DOWNTOWN GERALDTON
FULL LINE
DEPARTMENT STORE
LARGE SELECTION OF
CAMPING & FISHING GEAR -
QUALITY AND SERVICE
854-1640
MAIN ST - GERALDTON

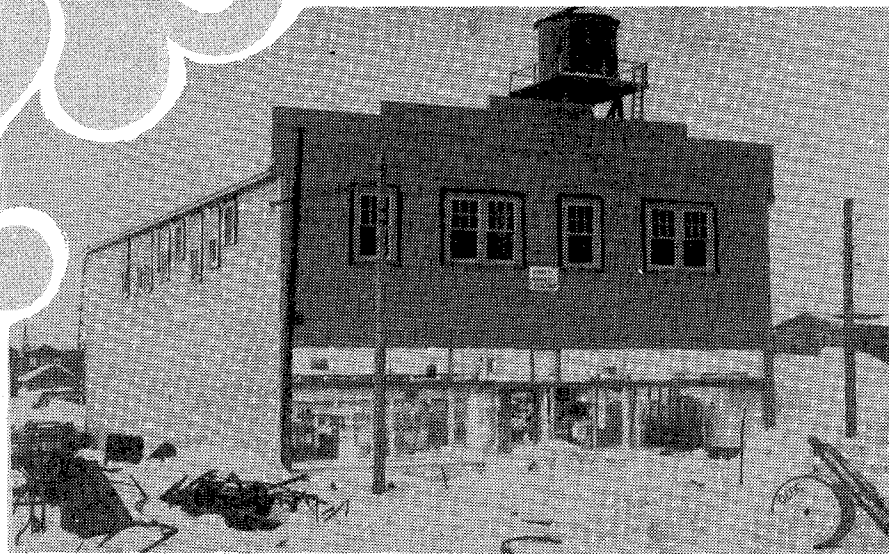
VON GUNTEN JEWELLERS

THE GIFT STORE
COLLECTIBLES - CRYSTAL
AND MUCH MUCH MORE!
854-1530
204 Main Street
Geraldton

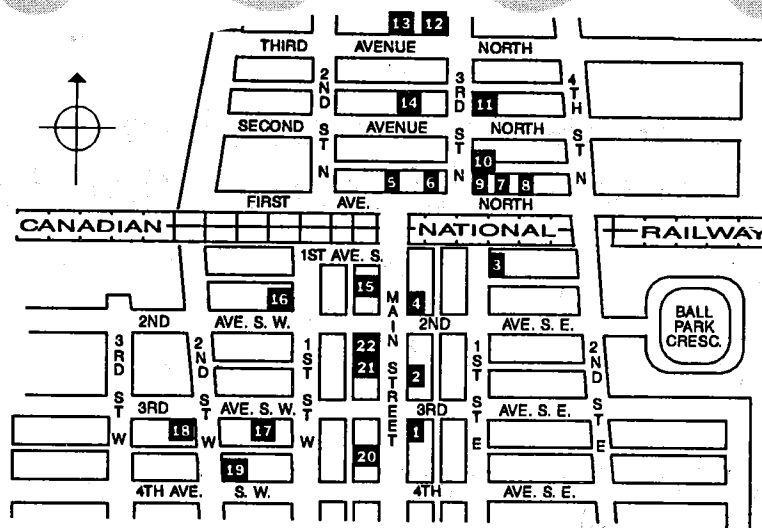


**Stedmans
V&S**

Department Store
offers for your shopping
convenience
Souvenirs - Family Clothing
Bedding - Toys - Candy
Housewares - Footwear
Health & Beauty
303 Main St.
Geraldton
(807) 854-0161



DANEFF'S FOOD STORE - 1937



CASINO DANCE GARDEN - 1937

Historical walk through Town

You will notice that most of the older buildings have false fronts, Avenues run East and West, and Streets run North and South.

1. We will begin on the east side of Main Street at the Pharmacy, on the corner of Main and Third Avenue South East. Built in 1936, the Pharmacy (though renovated) is operated by the third owners in the same location.

2. Popeye Restaurant, built in 1934-35, was the first establishment opened on Main Street. Originally a tiny grocery store, it became Murphy's Lunch, and later, the Geraldton Tea Room.

3. Continue along Main Street to Second Avenue South East. Turn right and continue to First Street East. Turn left. At the end of First Street East is the Chimo building, formerly Geraldton Millworks, founded by Otto Kristjanson, whose grandson is presently part owner of the business. A good portion of the main building was the former Hudson's Bay Trading Post, transported from Longlac.

4. Retrace your steps to Main Street. The Royal Bank occupies the site of the first dance hall, the Casino Dance Garden. The downstairs consisted of a bowling alley and the Capital Barber Shop.

5. Continue up Main Street and across the railway tracks. Directly across the street is Daneff's Foods. The original building, destroyed by fire, was re-

built in 1937 by Miteo Daneff.

6. Continuing east, the vacant corner lot you see to the left was occupied by the Geraldton Hotel, the first permanent structure in Town, from 1934 to Dec. 1992.

7. JoAnne's Boutique was originally the Geraldton Pool Room.

8. The two-storey stucco building, second from JoAnne's, was built in 1935 and served as Geraldton's first Post Office.

9. Retrace your steps to Third Street North. All that remains from the Gordon Block, later the Royal Bank, is the vault.

10. Reelwood, a cabinet manufacturer, now occupies the old Strand Theatre, first brick building built in the 1930s.

11. Continue on Third Street North until you approach Third Avenue North. The Windsor Rooms was originally the Scandanavian Cafe.

12. The Geraldton Bakery, directly across the corner of Third Avenue North, was originally built in 1938 and has been extended since then.

13. Continuing west from the Bakery, the third building on your right is the Seaman Building. It was a rooming house,

the first Separate School in the 1940s, and is now an apartment building.

14. Continue west and turn left on Second Street North, until you reach Second Avenue North West. Turn left and continue east until you come to the Rectory. The first Catholic Church was joined to the Rectory, making an 'L' shaped building, built in 1936. The church was torn down and replaced with the new church to the rear.

15. Continue east on Second Avenue North to Third Street North. Continue to Main Street keeping to the west side of the street. MacLeods Store, operated by the Mascotto family, started out as Mascotto's Garage, headquarters of the taxi company and the Goldfield Bus Lines. Both were owned and operated by brothers Tony and John Mascotto.

16. Continue on Main Street until Second Avenue South West. Turn right. The Draper home, #200, is in the second block. It was constructed in 1936 and was one of the community's stylish residences. It belonged to W. Foster Draper, past owner of the Geraldton Hotel and the Town's first Mayor.

17. Turn left on Second Street West and turn left on Third Avenue South West. The Chateau Apartments, #203, began as the Columbia Rooms, built in 1937. It was the first lodging house to have running water.

18. Retrace your steps up Third Avenue South West until you come to St. Andrews Presbyterian Church. From the parking lot, you can see where the first church expanded.

19. Turn right on Second Street West. Turn left on Fourth Avenue South West. On the corner to your left is the home of D.W. Neill, 210, built in 1936. Dave Neill was an accountant and prominent figure in many community affairs. Mrs. Dorothea Neill, who still resides in the home, played a major role in founding the first Public School Board and Annual Music Festival.

20. Continue east and turn left on Main Street. This vacant building has housed many businesses but was originally a bowling alley.

21. Continue north on Main Street. Von Gunten Jewellers was the second brick structure of the 1930s. It was first occupied by the Dominion Bank (later the TD Bank).

22. Albert's Rec Hall operates on the premises of the former Jim's Pool Room.

The name of Geraldton is a composite word formed from the names of key promoters of the Little Long Lac Gold Mine; S. J. Fitzgerald and Joe Errington.

We hope you have enjoyed our historical walk through Geraldton and hope you enjoy the remainder of your stay here.

We thank Edgar Lavoie, author of Muskeg Tours, for authorizing the use of his book as reference in developing this walking tour.