



**KWG RESOURCES INC.**

CANADA CHROME CORPORATION

## The Ring of Fire Partnership

M.J.(Moe) Lavigne, VP Exploration

November 24, 2016

## CAUTIONARY NOTE REGARDING FORWARD-LOOKING INFORMATION

*This presentation includes certain "forward-looking information" within the meaning of applicable Canadian securities legislation. Examples of such forward-looking information includes information regarding the timing, extent and success of exploration, development and mining activities, conclusions of economic evaluations (including those contained in the Technical Report, as defined herein), project financing requirements, project permitting, planned infrastructure for the Ring of Fire region and the estimated and anticipated economic impact of KWGs mineral projects. Forward-looking information is based on reasonable assumptions that have been made by the Company as at the date of such information and is subject to known and unknown risks, uncertainties and other factors that may cause the actual results, level of activity, performance or achievements of the Company to be materially different from those expressed or implied by such forward-looking information, including but not limited to: the impact of general business and economic conditions; risks related to government and environmental regulation, actual results of current exploration and development activities, changes in project parameters as plans continue to be refined; problems inherent to the marketability of base and precious metals; industry conditions, including fluctuations in the price of base and precious metals, fluctuations in interest rates; government entities interpreting existing tax legislation or enacting new tax legislation in a way which adversely affects the Company; stock market volatility; competition; risk factors disclosed in the Company's most recent Management's Discussion and Analysis and Annual Information Form, available electronically on SEDAR; and such other factors described or referred to elsewhere herein, including unanticipated and/or unusual events. Many such factors are beyond KWG's ability to control or predict.*

*Although the Company has attempted to identify important factors that could cause actual results to differ materially, there may be other factors that cause results not to be as anticipated, estimated or intended. There can be no assurance that forward-looking information will prove to be accurate as actual results and future events could differ materially from those reliant on forward-looking information.*

*All of the forward-looking information given in this presentation is qualified by these cautionary statements and readers are cautioned not to put undue reliance on forward-looking information due to its inherent uncertainty. KWG disclaims any intent or obligation to update any forward-looking information, whether as a result of new information, future events or results or otherwise, except as required by law. This forward-looking information should not be relied upon as representing the Company's views as of any date subsequent to the date of this press release.*

# About ; KWG Resources Inc



KWG Resources Inc is an exploration stage company that is positioned to be the worlds lowest cost producer of **ferrochrome**.

This premise is based on three essential components;

- 1- highgrade chromite deposits
- 2- low cost bulk transport
- 3- reducing chromite to ferrochrome using natural gas.

# About ; KWG Resources Inc



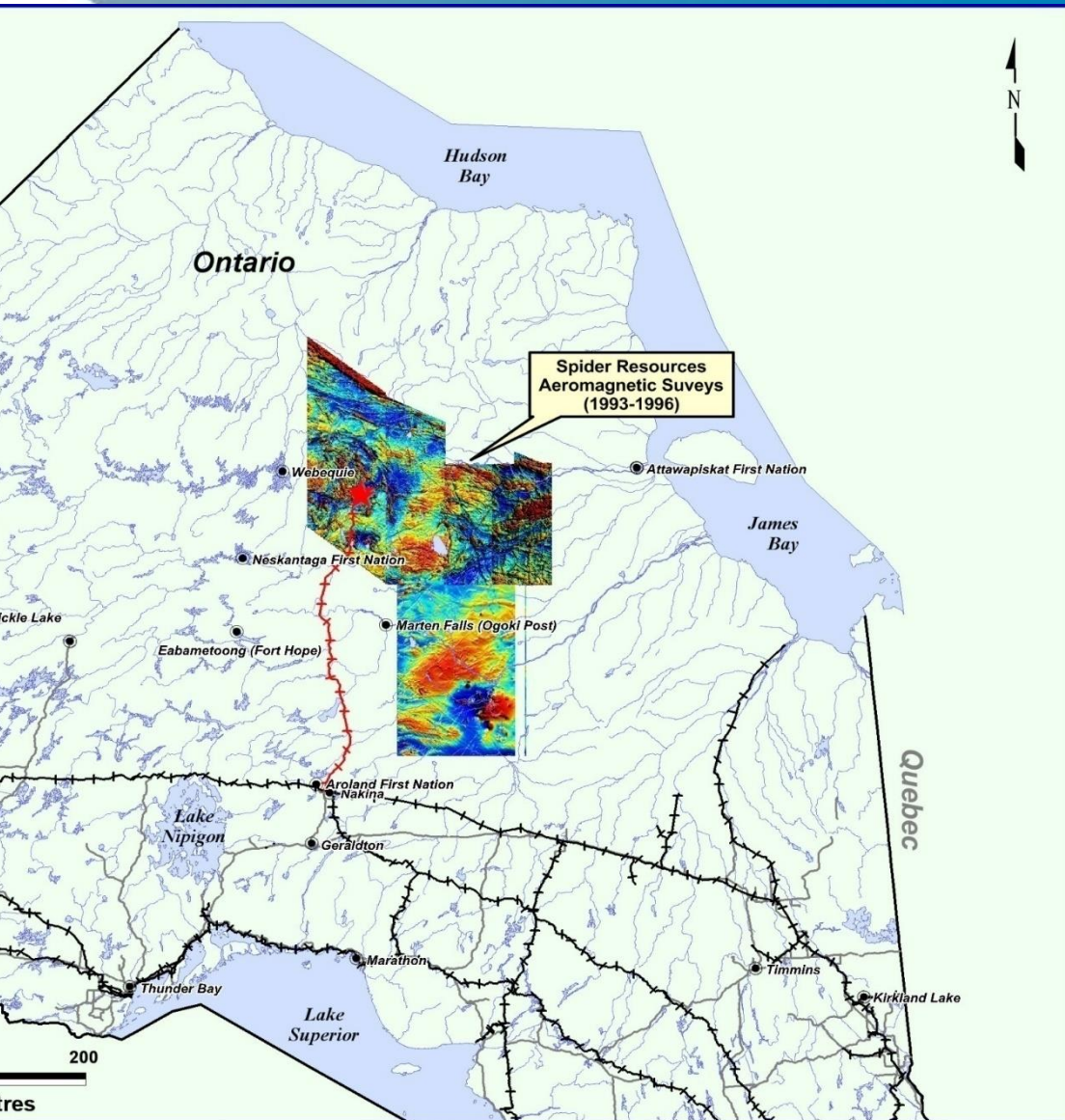
KWG Resources Inc is the only company in the Ring of Fire that is pursuing the development of chromite deposits.

# Brief history



KWG Resources Inc is in the process of attracting partners and financing needed to support this project and our vision for this development.

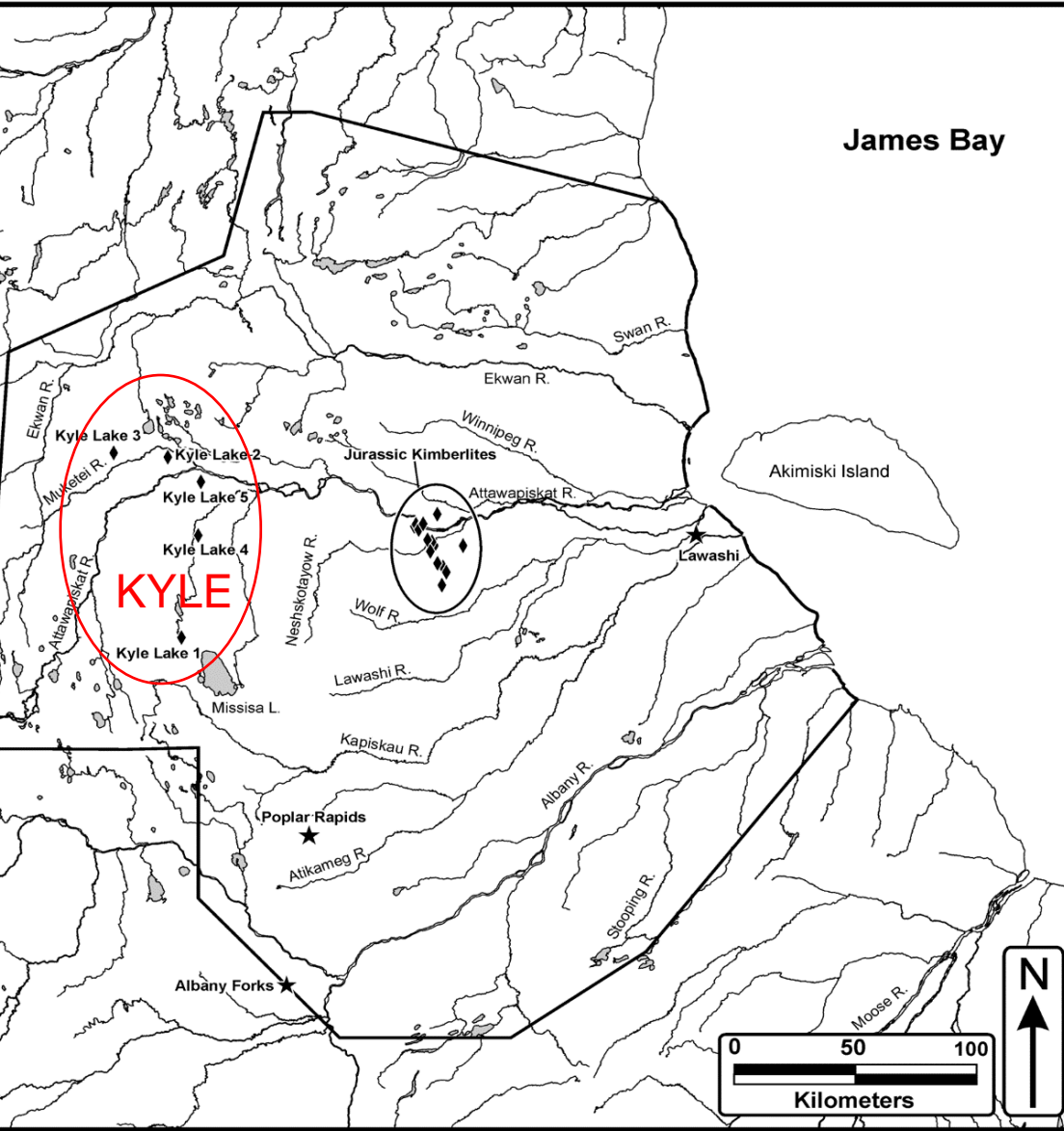
# Brief history



KWG began diamond exploration in the James Bay Lowlands in 1994.

KWG invested in a regional scale airborne magnetic survey aimed at discovering kimberlite pipes.

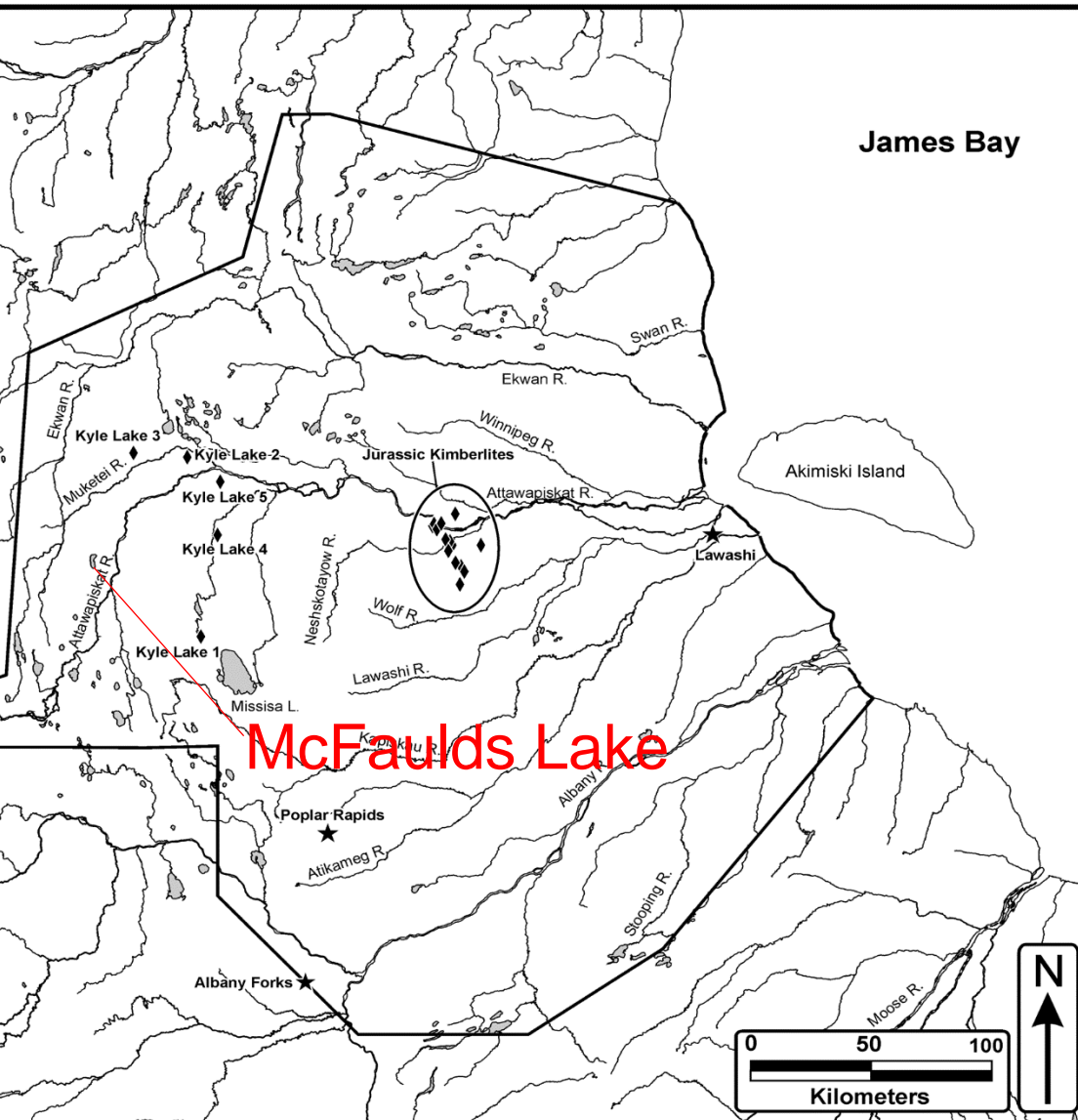
# Brief history



In 1994 mining claims were staked over magnetic anomalies.

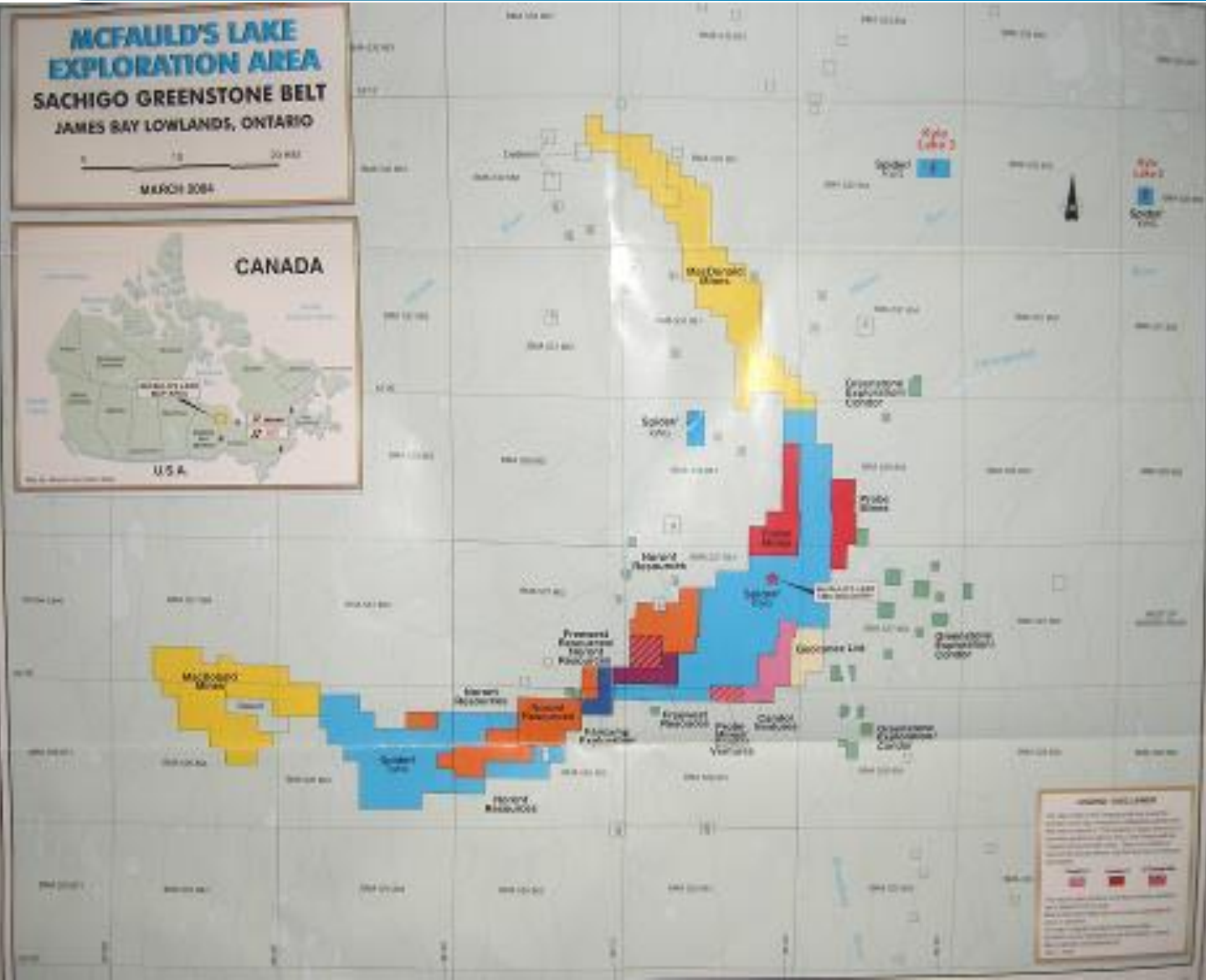
Drilling the anomalies led to the discovery of more kimberlite in the Attawapiskat cluster and also to the west, the Kyle pipes

# Brief history



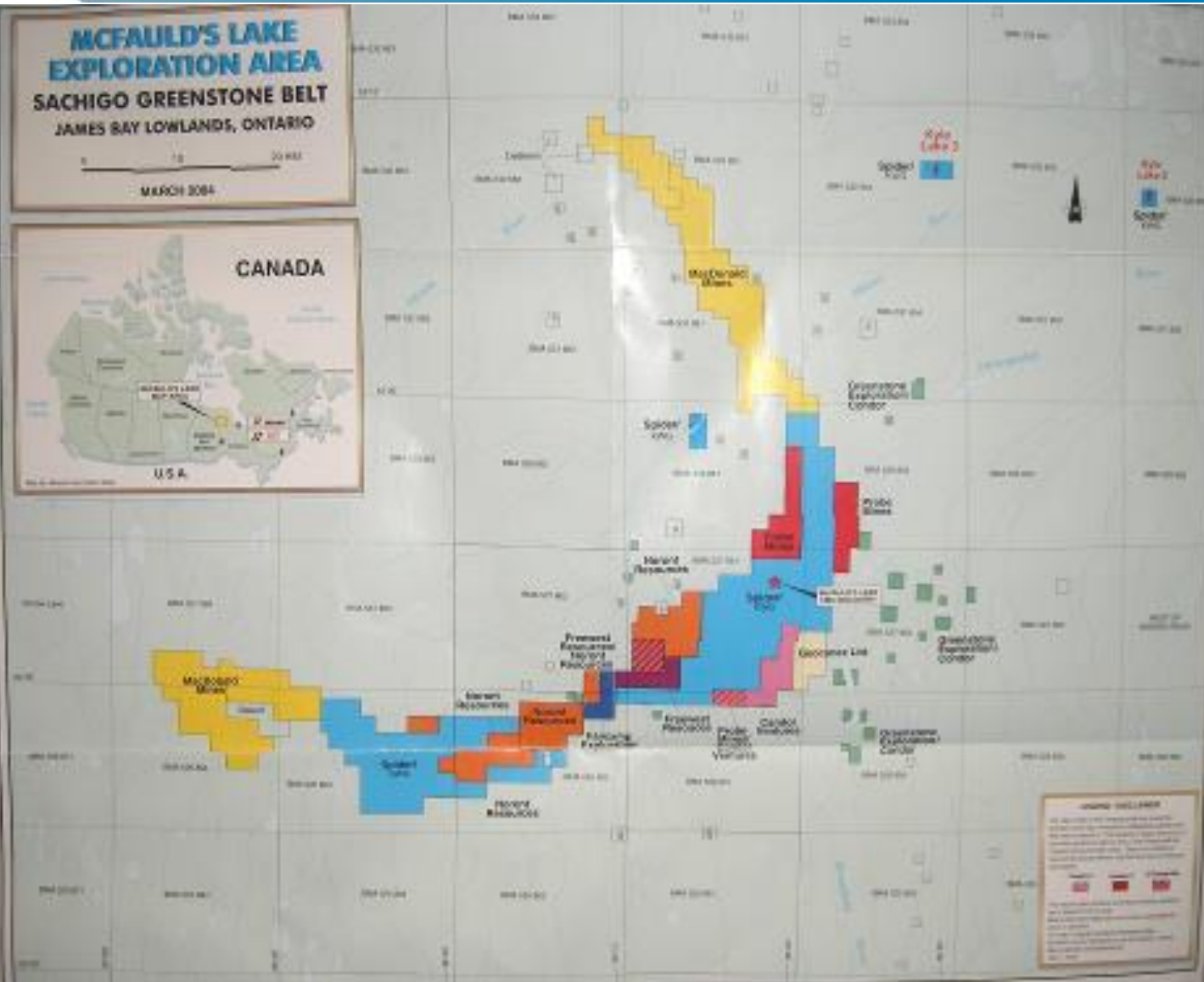
In 2001 Debeers drilled on a KWG claim at McFaulds Lake and discovered copper and zinc.

## Brief history



This discovery led to a claim staking rush that defined the “Ring of Fire”

# Brief history

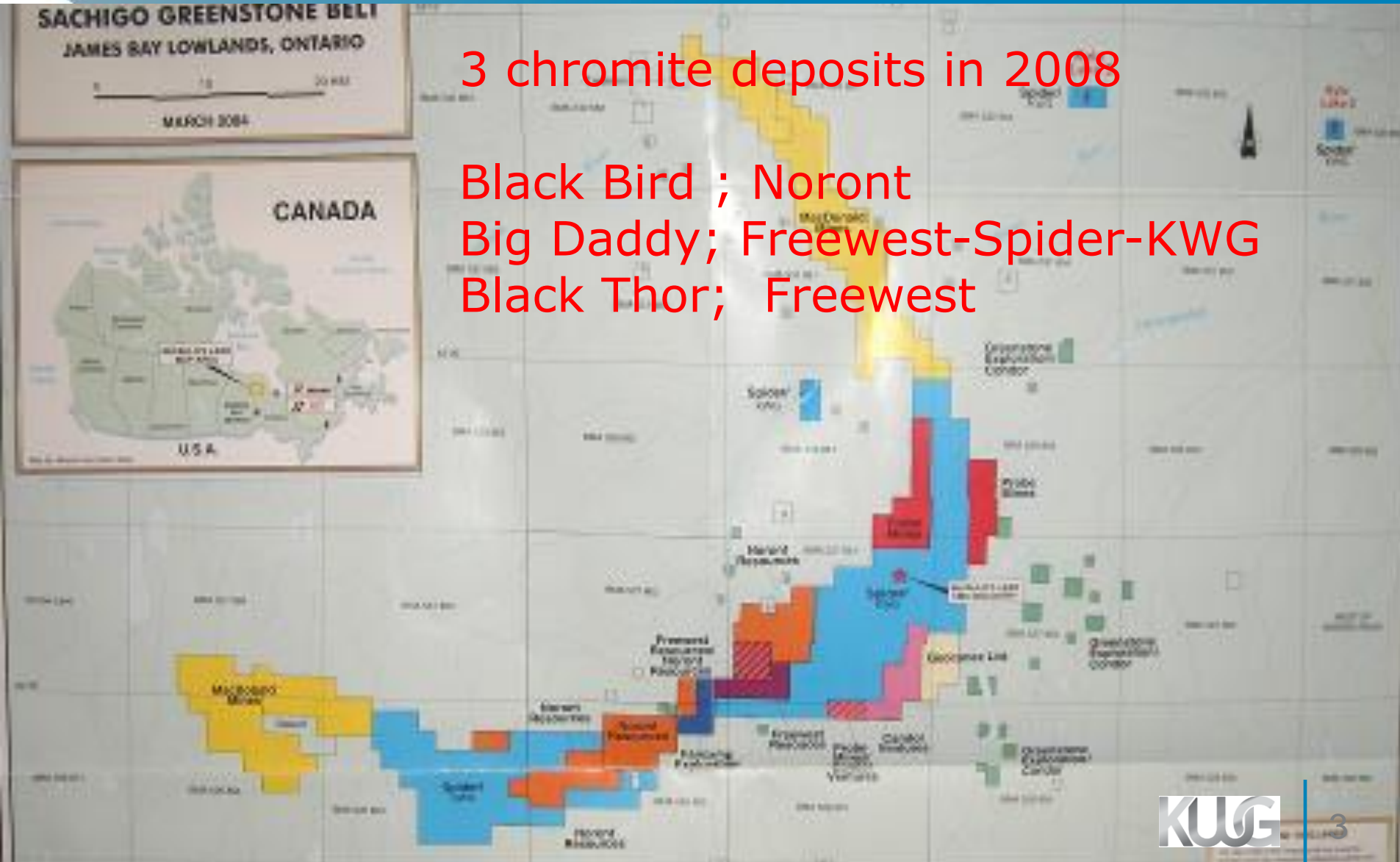


Noront discovered the Eagle copper-nickel-platinum deposit in 2007.

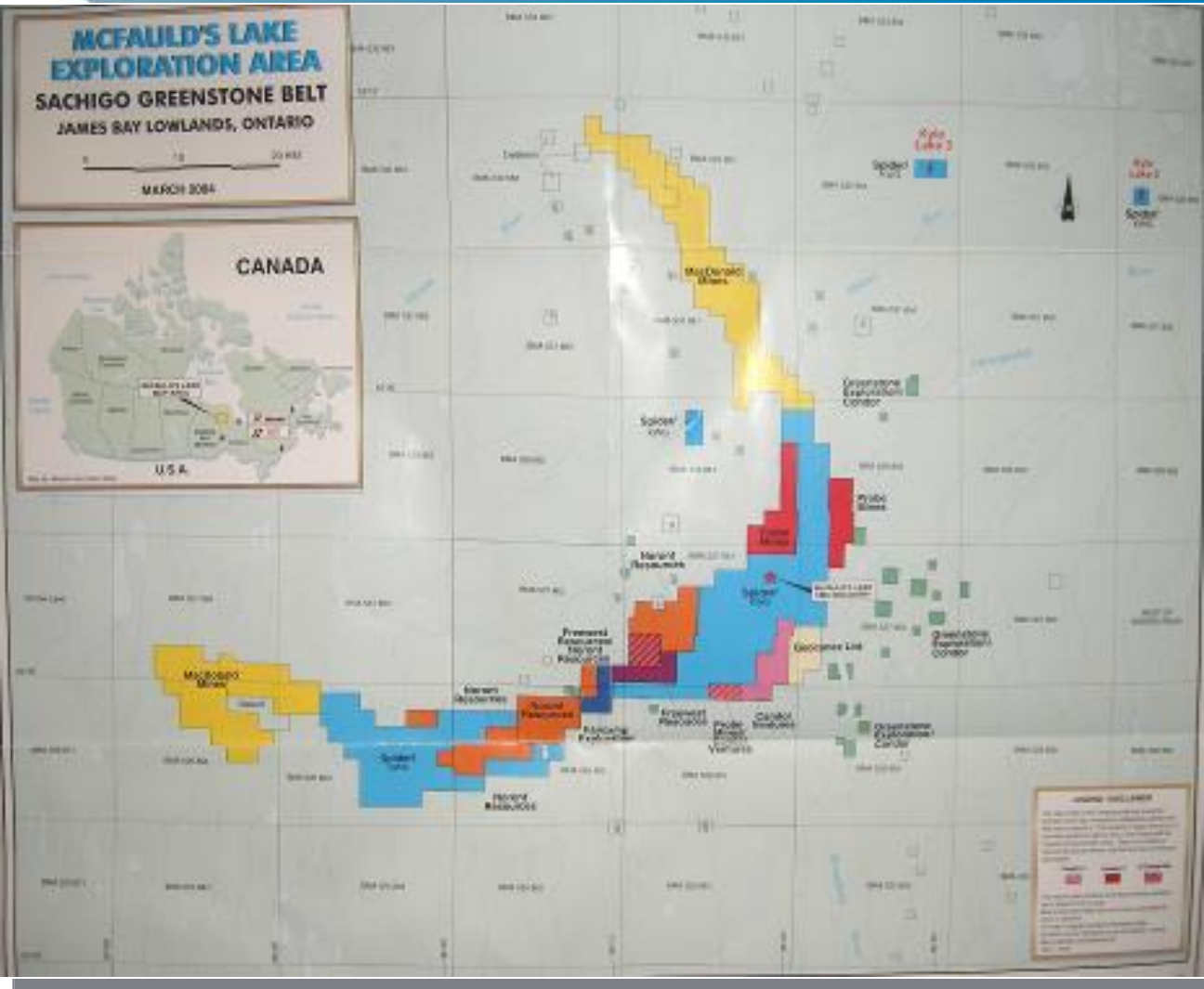
# Brief history

3 chromite deposits in 2008

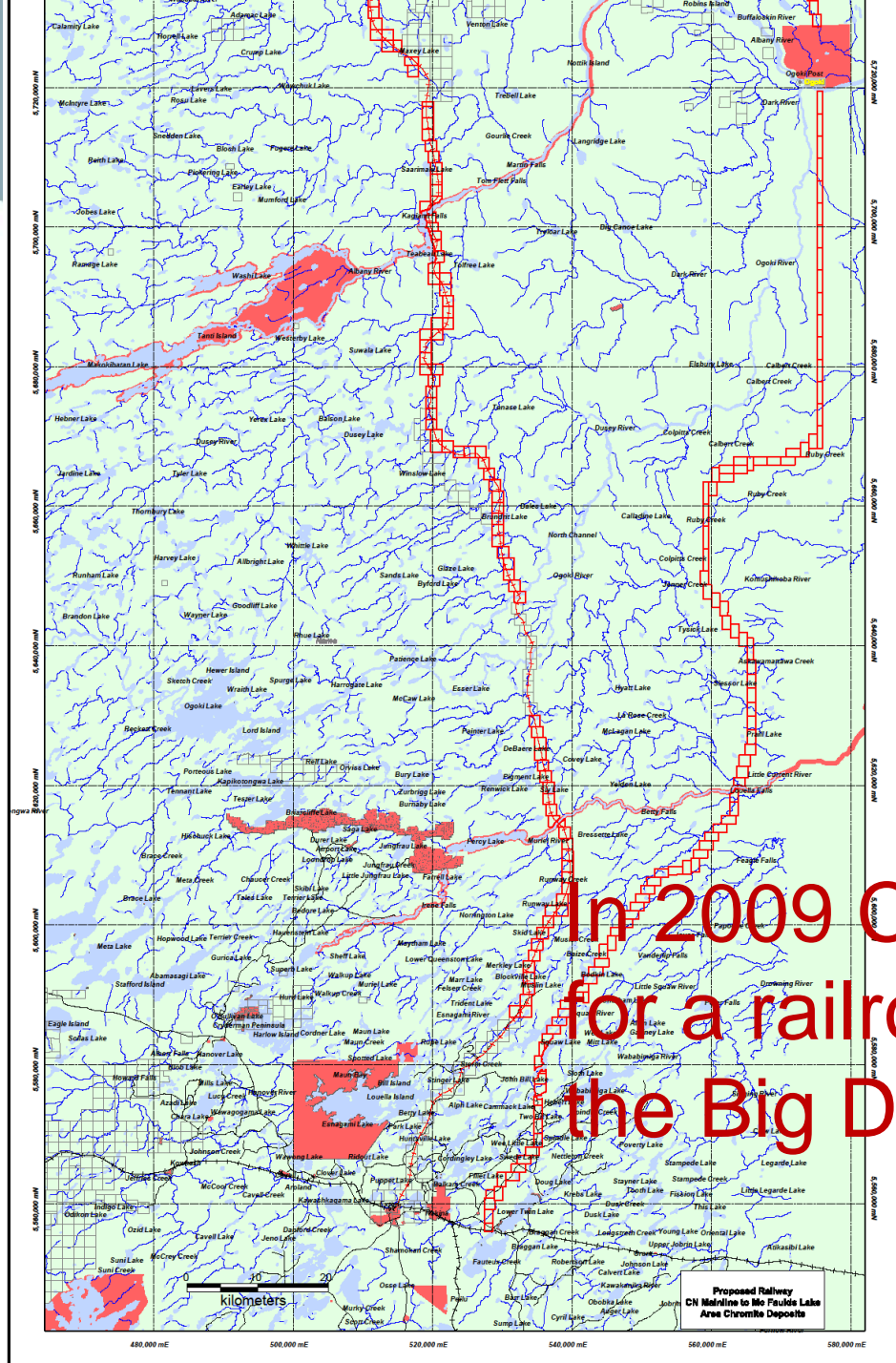
Black Bird ; Noront  
Big Daddy; Freewest-Spider-KWG  
Black Thor; Freewest



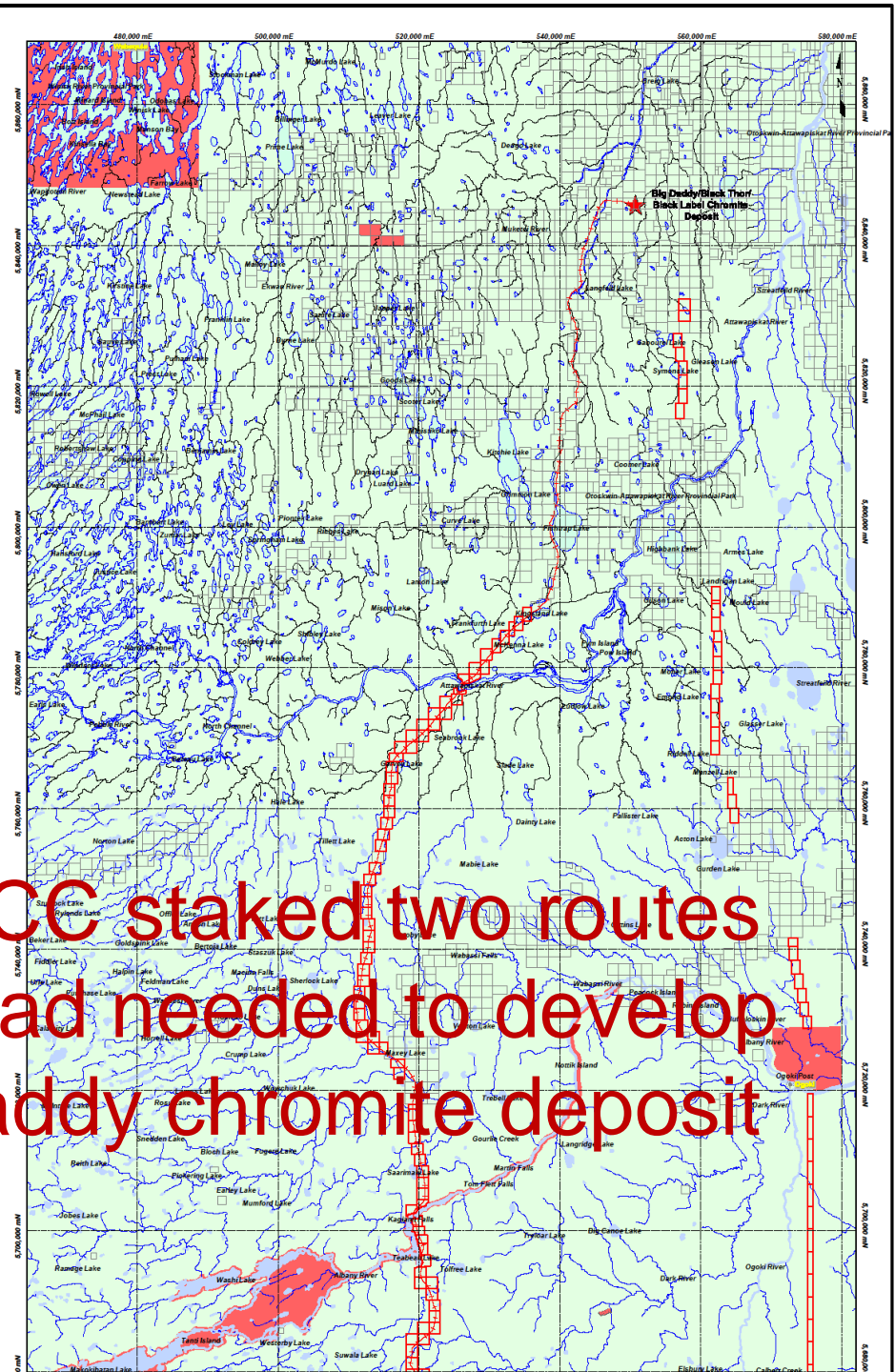
# Brief history



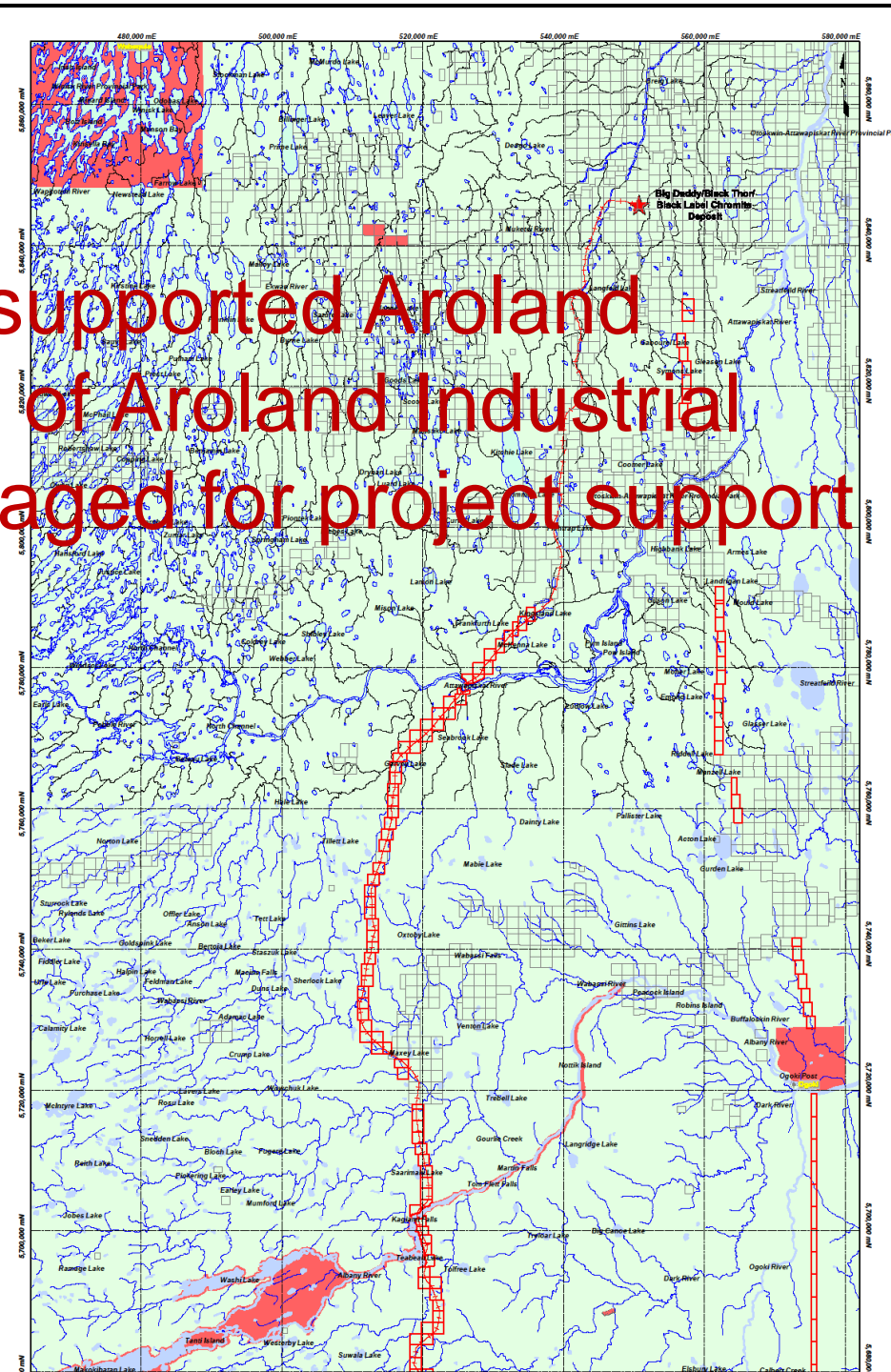
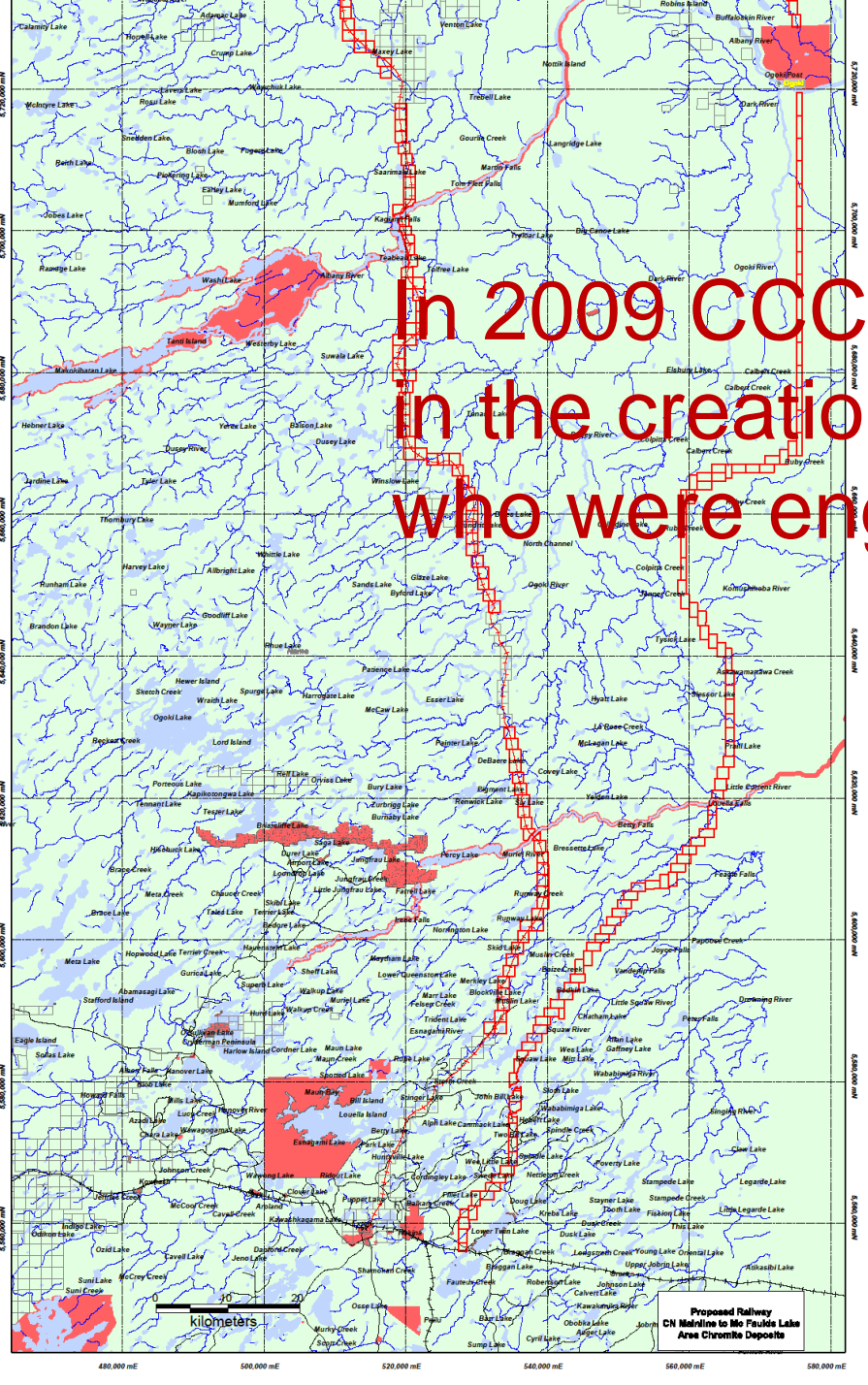
In 2008-2009  
KWG partners with  
Cliffs Natural Resources  
to support the  
development of the Big  
Daddy chromite deposit



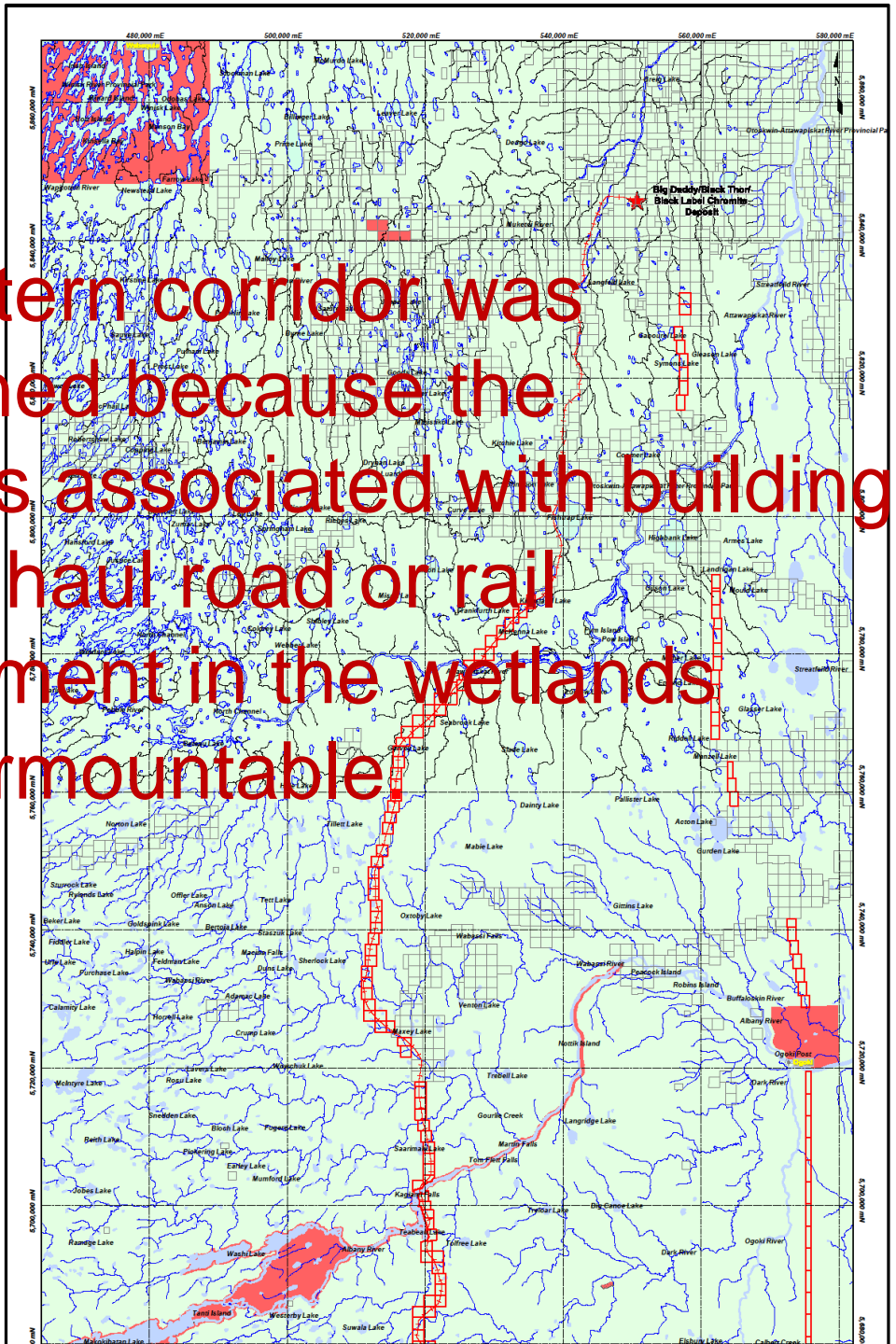
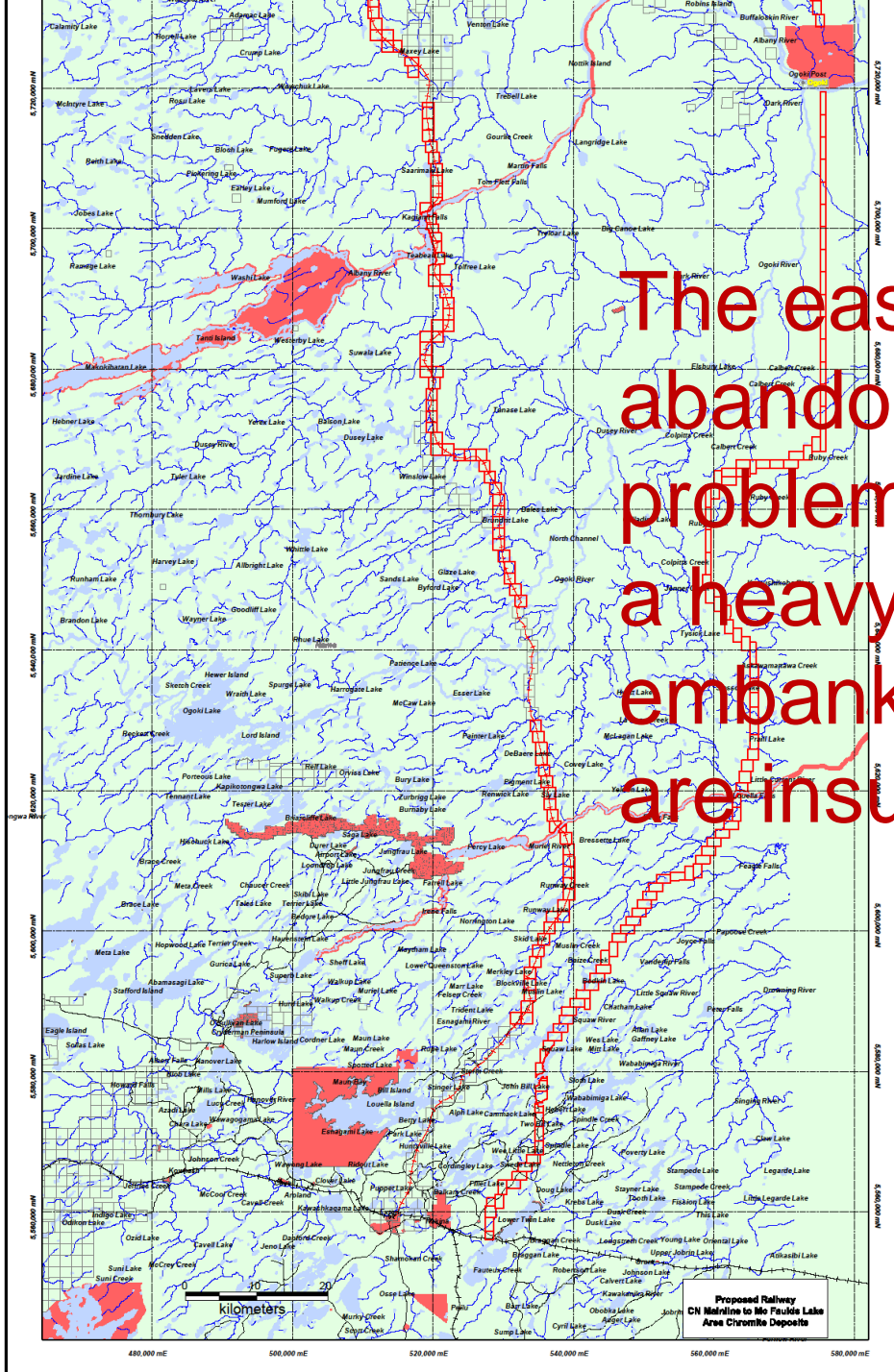
In 2009 CCC staked two routes  
for a railroad needed to develop  
the Big Daddy chromite deposit



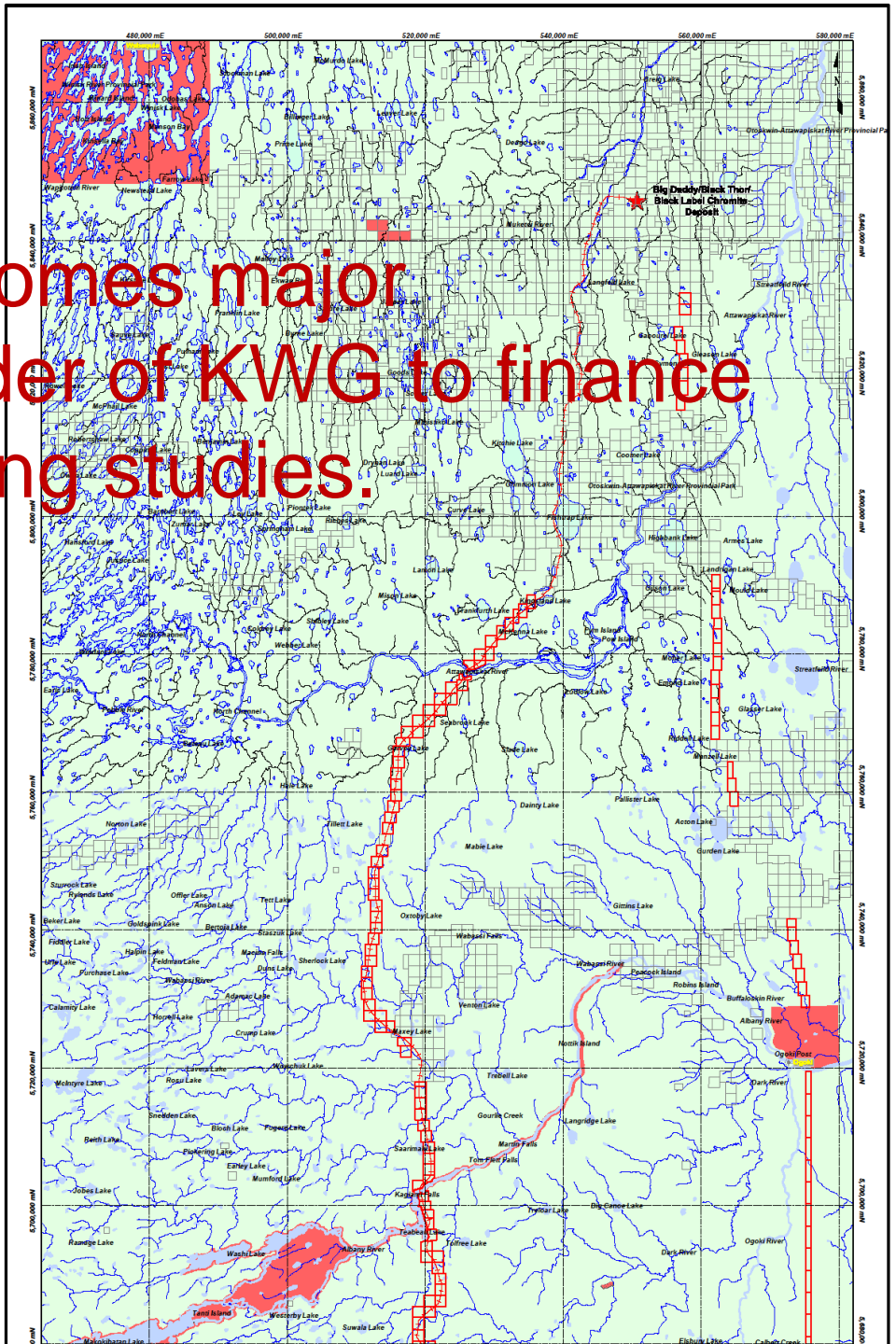
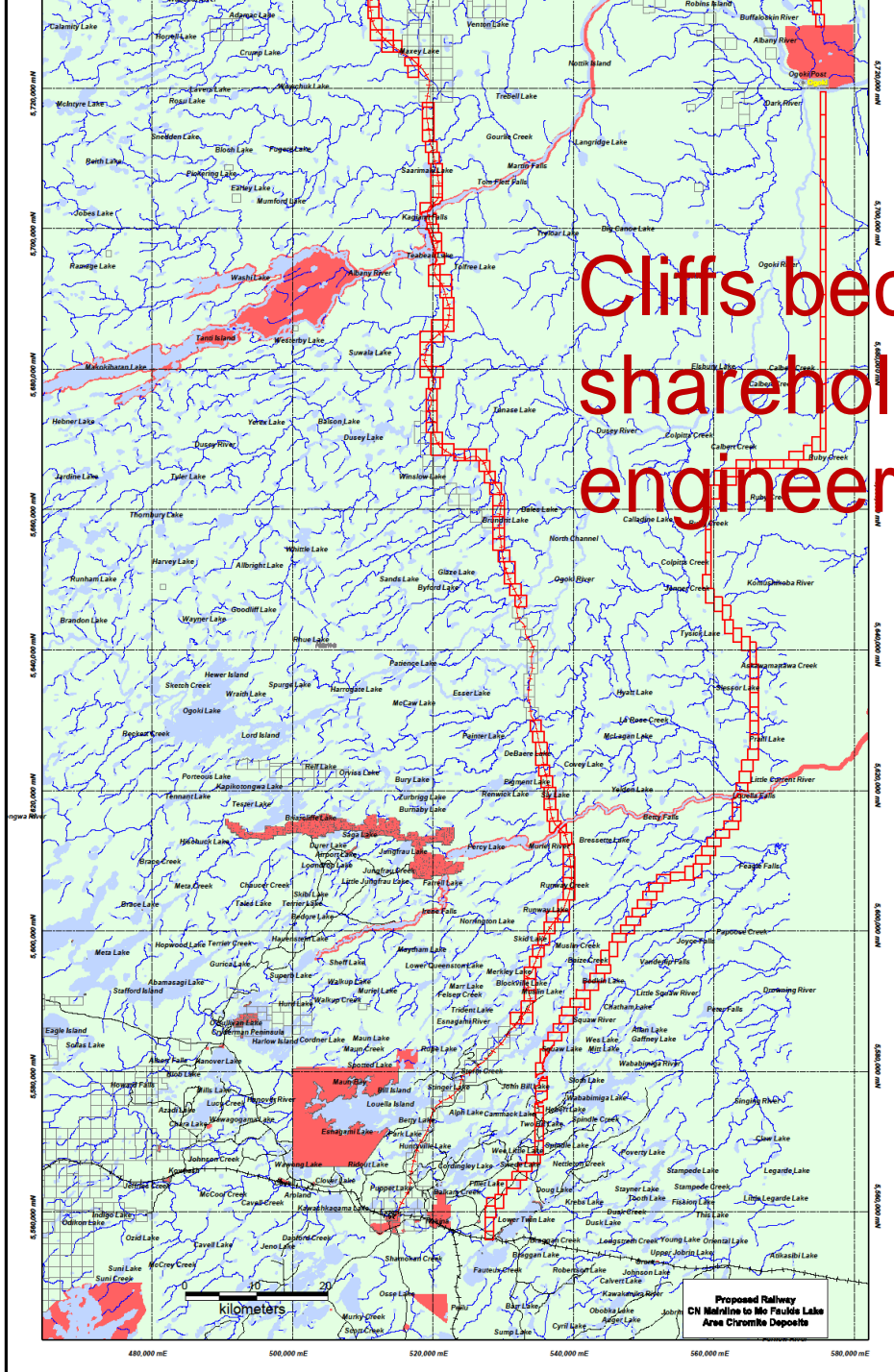
In 2009 CCC supported Aroland  
in the creation of Aroland Industrial  
who were engaged for project support



The eastern corridor was abandoned because the problems associated with building a heavy haul road or rail embankment in the wetlands are insurmountable



Cliffs becomes major shareholder of KWG to finance engineering studies.

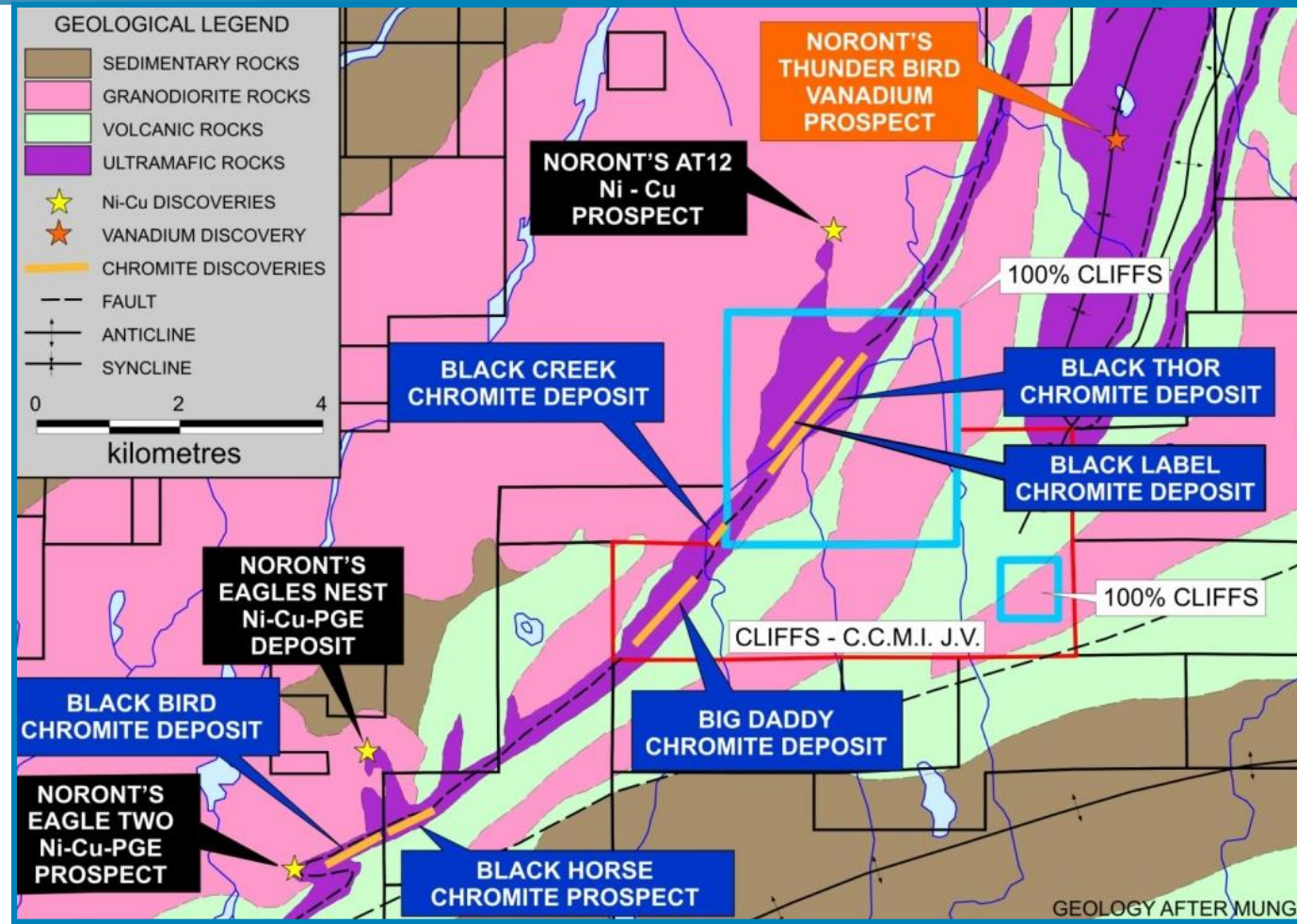


# Brief history

2010; Cliffs buys Freewest and Spider and control over Big Daddy and Black Thor

Cliffs proceeds with plans to develop Black Thor

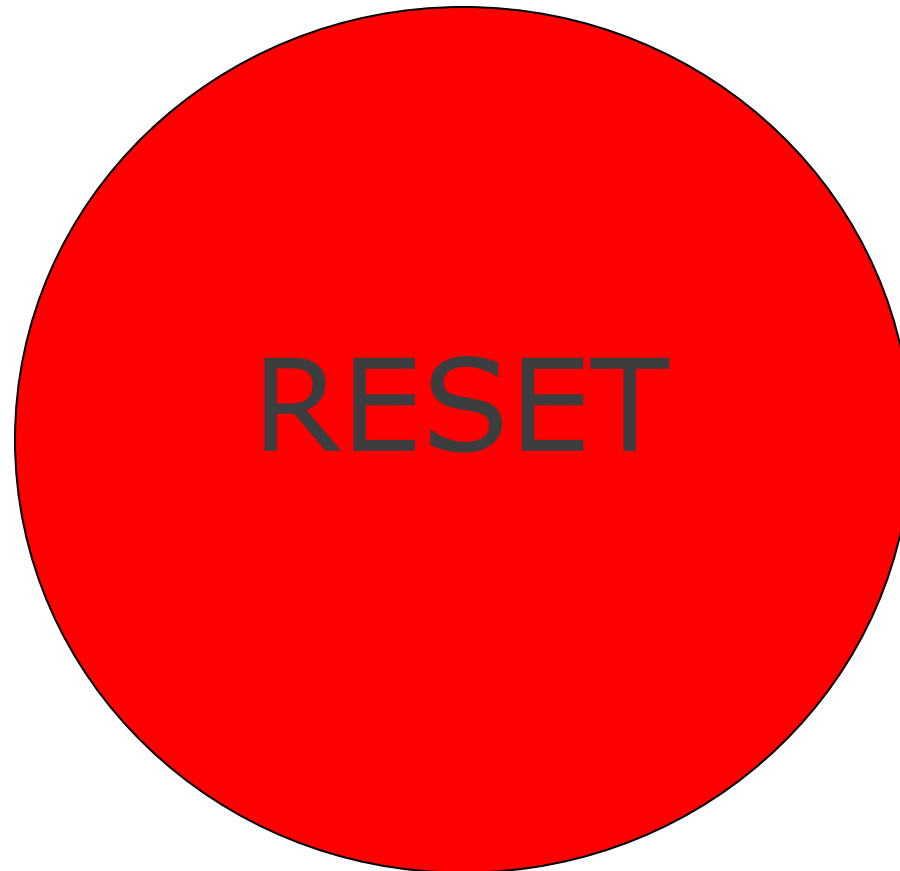
Cliffs wants to build a road where KWG wants to build a railroad



China Spot Iron Ore Prices by Quality vs. Industrial Production



# Brief history

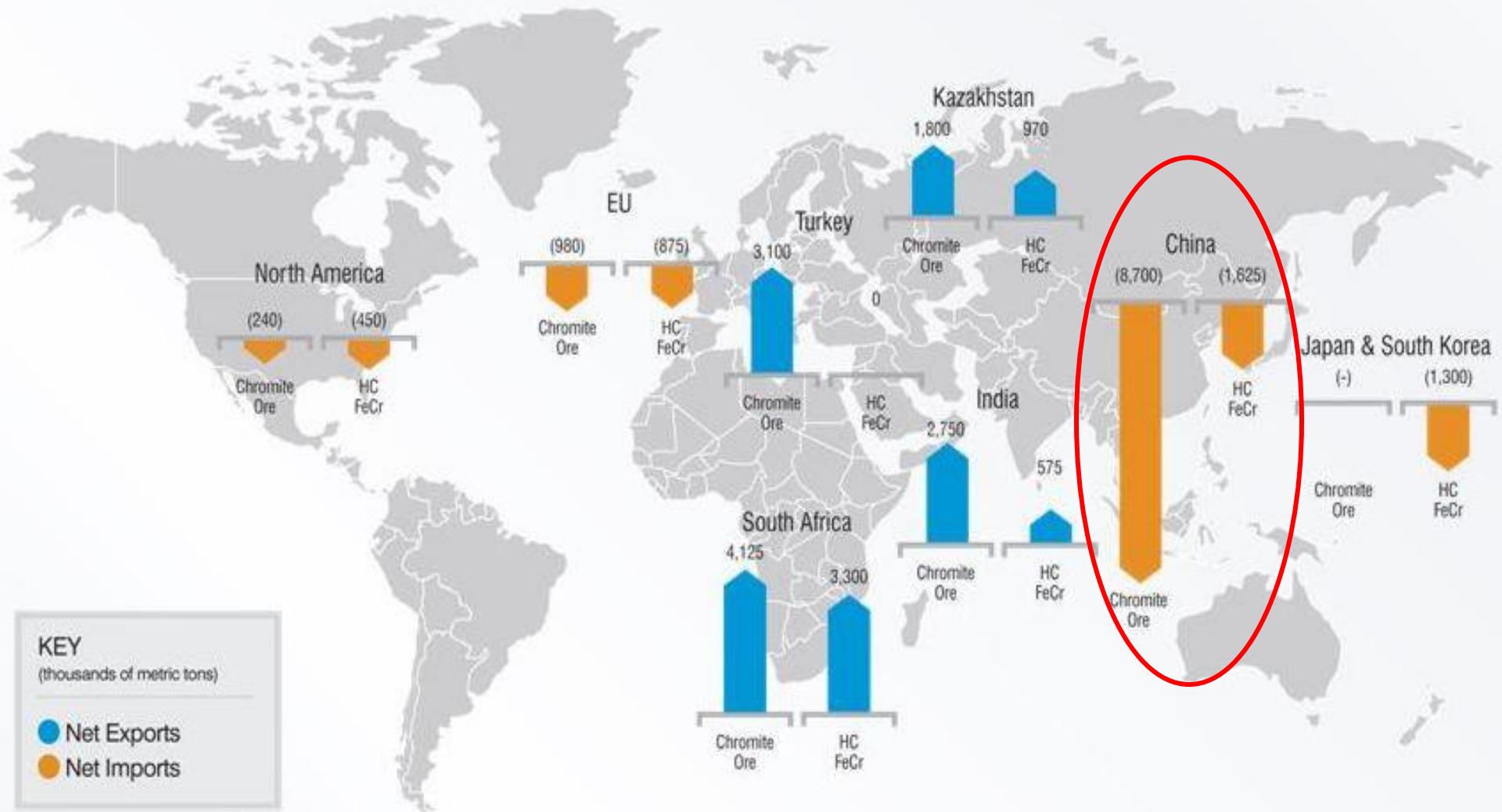


# Chromite mining, processing, marketing

## KEY HURDLES

- 1- Securing offtake agreements with the largest consumer, China
- 2- Finding a senior partner to build and finance railroad, China
- 3- Structuring ownership; First Nation–Government–China–KWG
- 4- Drill Black Horse deposit to support feasibility study
- 5- Commercialize gas reduction of chromite to ferrochrome
- 6- Seek financing to develop chromite mine and reduction facilities

## SIGNIFICANT CHROMITE ORE AND FERROCHROME SUPPLY DEFICITS EXIST IN NORTH AMERICA, EUROPE AND CHINA



# Why China?

- Worlds largest consumer of chromium (chromite, ferrochrome)
- China needs a secure long term supply of chromium
- Long term abundance of cheap North American natural gas
- Overcapacity of railroad engineering
- Convert foreign currency to hard assets

# China – Canada Synergies

- Supporting the development of gas reduction of chromite helps both countries meet their obligations under the **Paris Accord** because of lower energy consumption and lower greenhouse gas emissions.
- Increase trade and improve balance of trade

# ECONOMIC SUSTAINABILITY

## Reduce product cost

1 - Transportation to market ~ 65%

2 – Energy - reduction of chromite to ferrochrome

# TRANSPORTATION COST

## BULK TRANSPORT OPTIONS

Road vs Rail vs Pipe

Capital ; B\$1.05 vs B\$1.55 vs B\$0.56

OPEX(year); M\$183.18 vs M\$31.65 vs M\$23

Cost per tonne; \$60.78 vs \$10.5 vs \$7.72

# DIRECT REDUCTION PROCESS

## PRESS RELEASE

No. 162

**KWG**

Symbol on TSX Venture Exchange: **KWG**  
Shares issued and outstanding: **697,577,273**

---

## PATENT SOUGHT FOR NEW GAS CHROMITE REDUCTION METHOD

Toronto, Canada, October 25, 2013 - **KWG Resources Inc. (TSX-V: KWG)** (“KWG”) has filed a patent application in advance of discussions to commercialize a new method of refining into ferro chrome the chromite ore of its *Black Horse* deposit by means of natural gas. A partial disclosure of the process, summarized from such application, follows:

# DIRECT REDUCTION PROCESS

No. 232

**KWG**

Symbol on CSE: **KWG**

Shares issued and outstanding: **871,418,968**

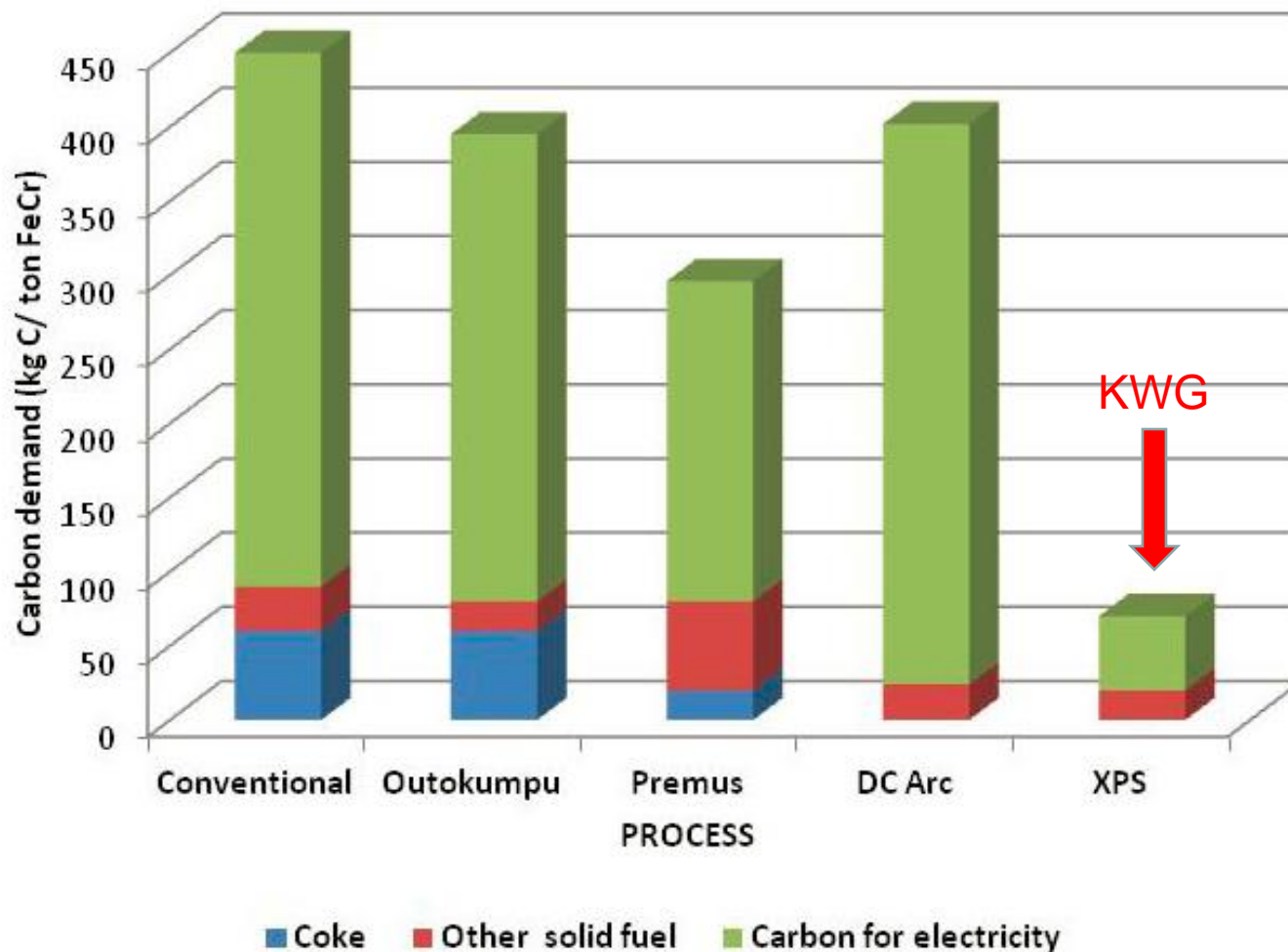
---

**KWG MOVES FORWARD ON GLOBAL PATENT PROTECTION BY UNDERTAKING NATIONAL PHASE OF GAS REDUCTION PATENT CLAIM WITH FILINGS IN KEY FERROCHROME-PRODUCING COUNTRIES: CANADA, CHINA, INDIA, INDONESIA, JAPAN, KAZAKHSTAN, SOUTH AFRICA, SOUTH KOREA, TURKEY, USA**

Toronto, Canada, March 22, 2016 – **KWG Resources Inc. (CSE: KWG) (FRANKFURT: KW6)** (“KWG”) is in the process of filing the National Phase in the above-identified countries under the Patent Cooperation Treaty to seek patent grants for its method to reduce chromite ore to metallics utilizing natural gas, a carbon reductant, and a catalyst formulation. The grant of a patent will be sought for the invention in each of the countries where the method might have commercial application and viability.

# DIRECT REDUCTION PROCESS

## Fossil Fuel Demand Comparison



# KET HURDLES

- 1- Securing offtake agreements with the largest consumer, China
- 2- Finding a senior partner to build and finance railroad, China
- 3- Structuring ownership; First Nation–Government–China–KWG
- 4- Drill Black Horse deposit to support feasibility study
- 5- Commercialize gas reduction of chromite to ferrochrome
- 6- Seek financing to develop chromite mine and reduction facilities

# CHINA

## KWG AND CHINA RAILWAY FSDI INK STRATEGIC COOPERATION AGREEMENT – FSDI TO COMPLETE CONDITIONAL BANKABLE FEASIBILITY STUDY

22 Aug 2016

**TORONTO, ONTARIO–(Aug. 22, 2016) – KWG Resources Inc.**

**(CSE:KWG)(FRANKFURT:KW6)** (“KWG”) announces that it has entered a Framework Strategic Cooperation Agreement with China Railway First Survey & Design Institute Group Co., Ltd. (“FSDI”). Pursuant to the Strategic Cooperation Agreement, the parties have also executed a Conditional Bankable Feasibility Study Consultation Service Agreement (“BFSCS”). Under terms of the BFSCS the parties have agreed on the deliverables and timetable for FSDI to complete a Conditional Bankable Feasibility Study on a railroad from the mineral properties in Ontario’s *Ring of Fire* to a junction with the CN Railroad at Exton, Ontario.

# KET HURDLES

- 1- Securing offtake agreements with the largest consumer, China
- 2- Finding a senior partner to build and finance railroad, China
- 3- Structuring ownership; China - Canada - First Nation
- 4- Drill Black Horse deposit to support feasibility study
- 5- Commercialize gas reduction of chromite to ferrochrome
- 6- Seek financing to develop chromite mine and reduction facilities

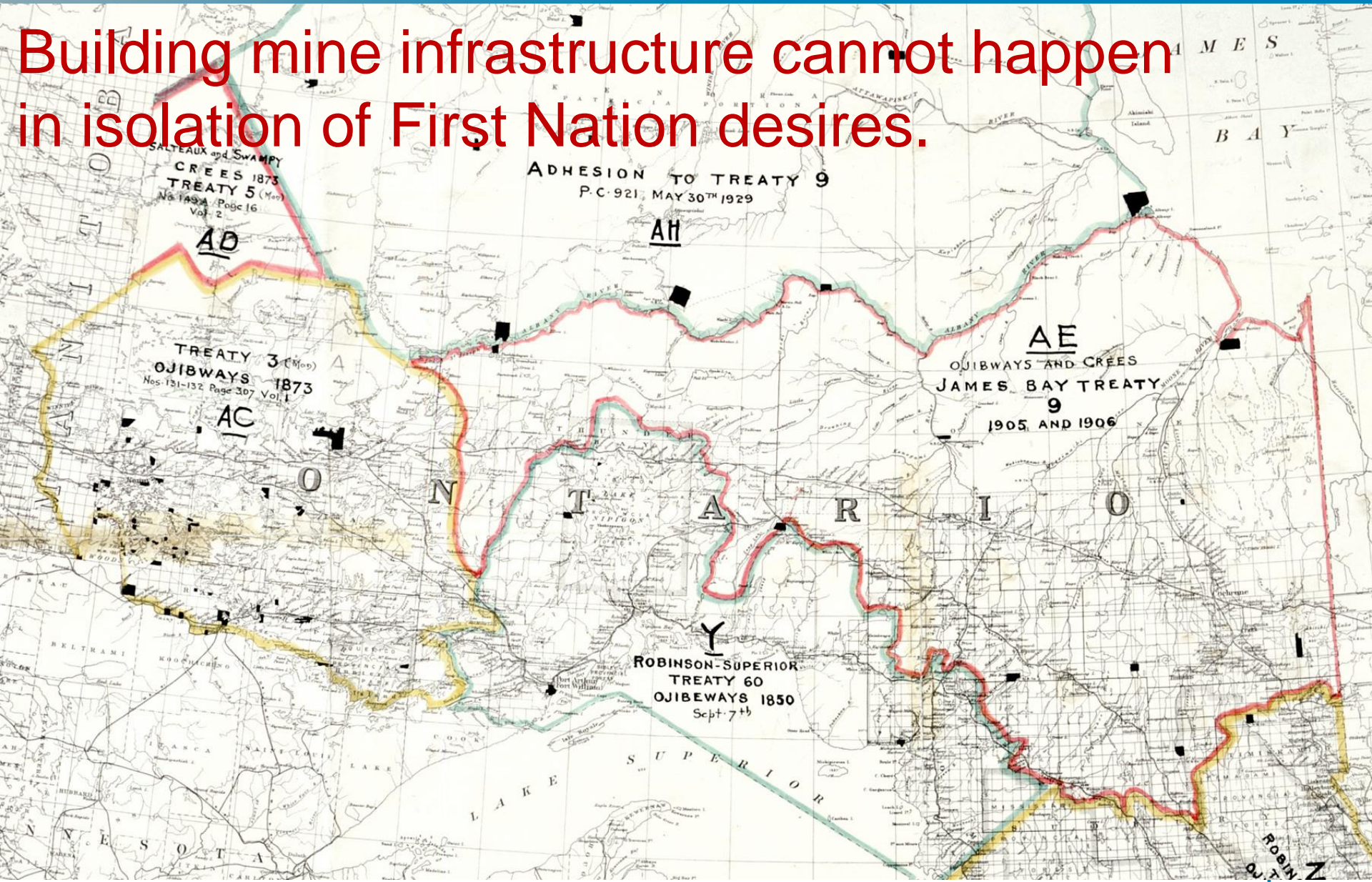
# First Nation Partners

KWG wishes to honour the spirit of the treaties and share the land



# First Nation Partners

Building mine infrastructure cannot happen in isolation of First Nation desires.



# FIRST NATION PARTERSHIP

KWG TABLES STUDY OF EAST-WEST ROAD TO RING OF FIRE NETWORKING EABAMETOONG, NESKANTAGA, WEBEQUIE AND MARTEN FALLS WITH NIBINAMIK, KINGFISHER, AND WUNNUMIN LAKE CONNECTIONS ALSO FEASIBLE

26 Aug 2016

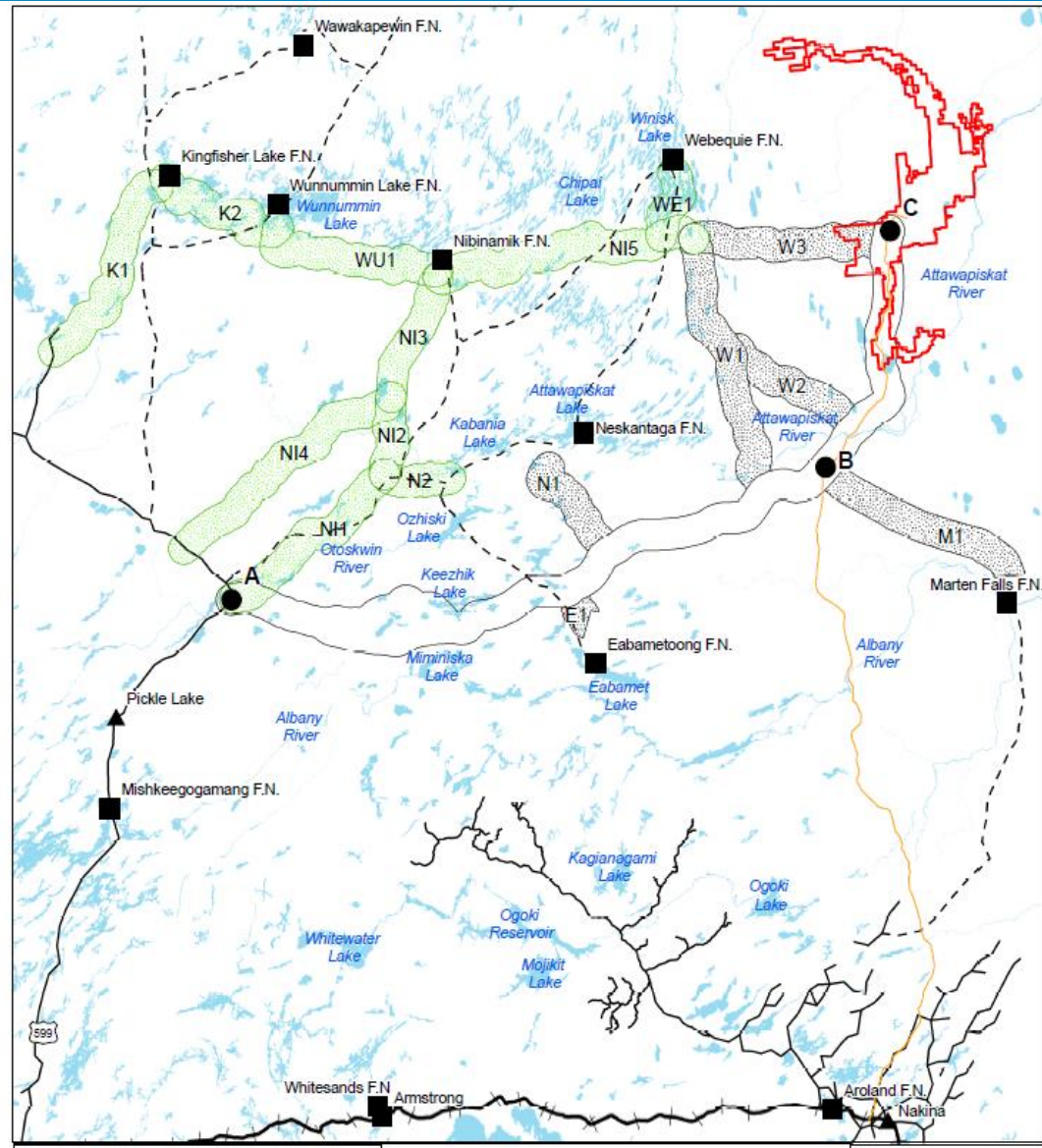
**TORONTO, ONTARIO–(Aug. 26, 2016) – KWG Resources Inc.**

**(CSE:KWG)(FRANKFURT:KW6)** (“KWG”) has posted on its website an all-weather road study that was previously prepared for it by Green Forest Management Inc. The report estimated that an all-weather gravel road starting in the west at the Northern Ontario Resource Trail Road northeast of Pickle Lake, projecting eastward to the *Ring of Fire* area over a distance of approximately 305 kilometres, would cost between \$83.6 million to \$99.9 million. Trunk roads from it to connect the First Nations communities of Eabametoong, Neskantaga, Webequie and Marten Falls would cost between \$36.1 million and \$73.1 million depending on the route alignments selected. The study notes that additional trunk roads to connect Nibinamik, Kingfisher, and Wunnumin Lake are also feasible but required further research for construction budgeting purposes.

# FIRST NATION PARTNERSHIP

Green Forrest Management Inc

Allow the terrain to dictate  
where roads may be built.



# FIRST NATION PARTNERSHIP

## KWG PROPOSES PARTNERSHIP WITH WEBEQUIE & MARTEN FALLS

02 Jun 2016

**TORONTO, ONTARIO–(June 2, 2016)** – In meetings this week **KWG Resources Inc. (CSE:KWG)(FRANKFURT:KW6)** (“KWG”) has discussed with the Chiefs of the Webequie and Marten Falls First Nations an outline of principal terms for the possible creation of an equal partnership through which to undertake the development and exploitation of mineral deposits in the *Ring of Fire*.

*“A little more than a year ago now, we welcomed the Webequie and Marten Falls First Nations joining forces to act together in concluding a ‘Negotiation Protocol Respecting Early Exploration in the Ring of Fire,’”* said KWG President Frank Smeenck. *“The railroad feasibility study that China Railway FSDI proposes to undertake for us is based on the railroad being part of the large-volume underground chromite mining operations being envisaged to supply a gas reduction processing facility where the chromite would be upgraded to ferrochrome. Those mining and transportation capital assets will be largely located within the traditional territories of Webequie and Marten Falls.*

# KET HURDLES

- 1- Securing offtake agreements with the largest consumer, China
- 2- Finding a senior partner to build and finance railroad, China
- 3- Structuring ownership; First Nation–Government–China–KWG
- 4- Drill Black Horse deposit to support feasibility study
- 5- Commercialize gas reduction of chromite to ferrochrome
- 6- Seek financing to develop chromite mine and reduction facilities

# COMPLETION OF FEASIBILITY STUDY

Complete resource definition drilling of Black Horse with the objective of delineating 150MT	\$25,000,000
Conduct widely spaced drilling to map out the continuity of the chromitite across the property. (optional)	\$10,000,000
Conduct pilot plant scale testing of the reduction of chromite by natural gas	\$7,000,000
Complete scoping level engineering and trade-off studies of the fully integrated operation	\$2,500,000
Orchestrate the private – public partnership on transportation infrastructure	\$1,000,000
Submit to the Environmental Assessment	\$3,650,000
Complete bankable feasibility study	\$25,000,000
<b>Total</b>	<b>\$74,150,000</b>

**Estimated CAPEX.....\$1,5 billion**

**Estimated Revenue...\$400 million/year**

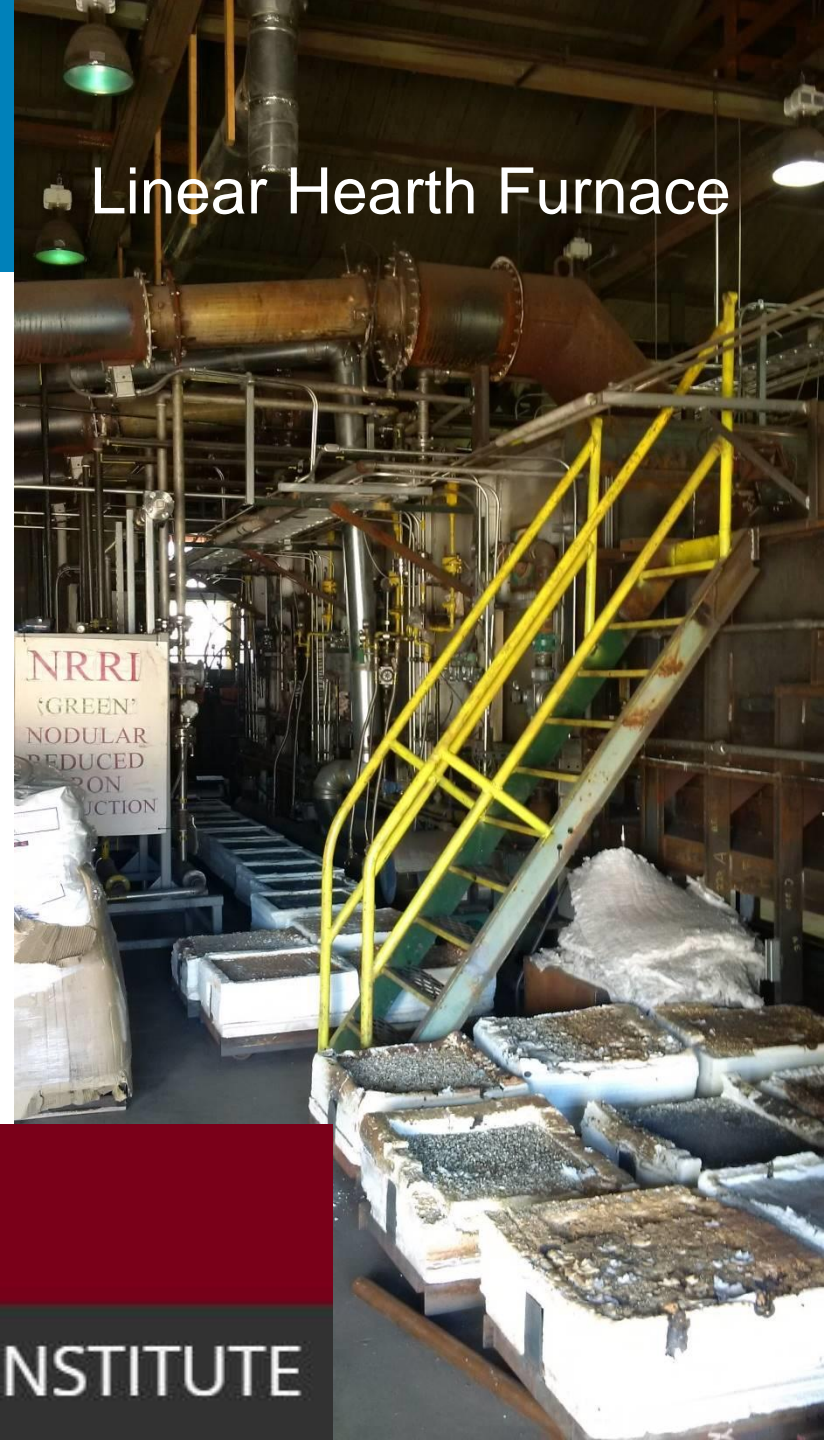
# KET HURDLES

- 1- Securing offtake agreements with the largest consumer, China
- 2- Finding a senior partner to build and finance railroad, China
- 3- Structuring ownership; First Nation–Government–China–KWG
- 4- Drill Black Horse deposit to support feasibility study
- 5- Commercialize gas reduction of chromite to ferrochrome
- 6- Seek financing to develop chromite mine and reduction facilities

# GAS REDUCTION

Pilot scale testing gas reduction of chromite to ferrochrome is underway at NRRI, Coleraine.

Linear Hearth Furnace



UNIVERSITY OF MINNESOTA DULUTH

Driven to Discover™

NATURAL RESOURCES RESEARCH INSTITUTE

# The End Game

- 1-Complete railroad feasibility study, submit to EA
- 2-Secure Chinese financing to build railroad
- 3-Commercialize gas reduction of chromite to ferrochrome
- 4-Establish offtake agreements for the sale of ferrochrome
- 5-Finance the development of the Black Horse chromite deposit
- 6-Organize the ownership and operation of the mine, processing facilities, railroad etc

# The End Game

- 1-Complete railroad feasibility study, submit to EA
- 2-Secure Chinese financing to build railroad
- 3-Commercialize gas reduction of chromite to ferrochrome
- 4-Establish offtake agreements for the sale of ferrochrome
- 5-Finance the development of the Black Horse chromite deposit
- 6-Organize the ownership and operation of the mine, processing facilities, railroad etc

# The End Game

- 1-Complete railroad feasibility study, submit to EA
- 2-Secure Chinese financing to build railroad
- 3-Commercialize gas reduction of chromite to ferrochrome
- 4-Establish offtake agreements for the sale of ferrochrome
- 5-Finance the development of the Black Horse chromite deposit
- 6-Organize the ownership and operation of the mine, processing facilities, railroad etc

# The End Game

- 1-Complete railroad feasibility study, submit to EA
- 2-Secure Chinese financing to build railroad
- 3-Commercialize gas reduction of chromite to ferrochrome
- 4-Establish offtake agreements for the sale of ferrochrome
- 5-Finance the development of the Black Horse chromite deposit
- 6-Organize the ownership and operation of the mine, processing facilities, railroad etc

# The End Game

- 1-Complete railroad feasibility study, submit to EA
- 2-Secure Chinese financing to build railroad
- 3-Commercialize gas reduction of chromite to ferrochrome
- 4-Establish offtake agreements for the sale of ferrochrome
- 5-Finance the development of the Black Horse chromite deposit
- 6-Organize the ownership and operation of the mine, processing facilities, railroad etc

# The End Game

- 1-Complete railroad feasibility study, submit to EA
- 2-Secure Chinese financing to build railroad
- 3-Commercialize gas reduction of chromite to ferrochrome
- 4-Establish offtake agreements for the sale of ferrochrome
- 5-Finance the development of the Black Horse chromite deposit
- 6-Organize the ownership and operation of the mine, processing facilities, railroad etc

# The Partnerships

Until this proposed development is funded, it's not a project.  
It's the study of an opportunity.

China understands the opportunity.

Politics prevent Canada and Ontario from fully embracing this opportunity.

We feel that “consultation and accommodation” does not meet the expectation of “sharing the land”, only full partnership, ownership and control does.

We invite First Nations to explore this opportunity with us.

Transforming this vision into a reality requires dialogue and alignment of interest between parties.

# The Partnerships

Until this proposed development is funded, it's not a project.  
It's the study of an opportunity.

China understands the opportunity.

Politics prevent Canada and Ontario from fully embracing this opportunity.

We feel that “consultation and accommodation” does not meet the expectation of “sharing the land”, only full partnership, ownership and control does.

We invite First Nations to explore this opportunity with us.

Transforming this vision into a reality requires dialogue and alignment of interest between parties.

# The Partnerships

Until this proposed development is funded, it's not a project.  
It's the study of an opportunity.

China understands the opportunity.

Politics prevent Canada and Ontario from fully embracing this opportunity.

We feel that “consultation and accommodation” does not meet the expectation of “sharing the land”, only full partnership, ownership and control does.

We invite First Nations to explore this opportunity with us.

Transforming this vision into a reality requires dialogue and alignment of interest between parties.

# The Partnerships

Until this proposed development is funded, it's not a project.  
It's the study of an opportunity.

China understands the opportunity.

Politics prevent Canada and Ontario from fully embracing this opportunity.

We feel that “consultation and accommodation” does not meet the expectation of “sharing the land”, only full partnership, ownership and control does.

We invite First Nations to explore this opportunity with us.

Transforming this vision into a reality requires dialogue and alignment of interest between parties.

# The Partnerships

Until this proposed development is funded, it's not a project.  
It's the study of an opportunity.

China understands the opportunity.

Politics prevent Canada and Ontario from fully embracing this opportunity.

We feel that “consultation and accommodation” does not meet the expectation of “sharing the land”, only full partnership, ownership and control does.

**We invite First Nations to explore this opportunity with us.**

Transforming this vision into a reality requires dialogue and alignment of interest between parties.

# The Partnerships

Until this proposed development is funded, it's not a project.  
It's the study of an opportunity.

China understands the opportunity.

Politics prevent Canada and Ontario from fully embracing this opportunity.

We feel that “consultation and accommodation” does not meet the expectation of “sharing the land”, only full partnership, ownership and control does.

We invite First Nations to explore this opportunity with us.

Transforming this vision into a reality requires dialogue and alignment of interest between parties.